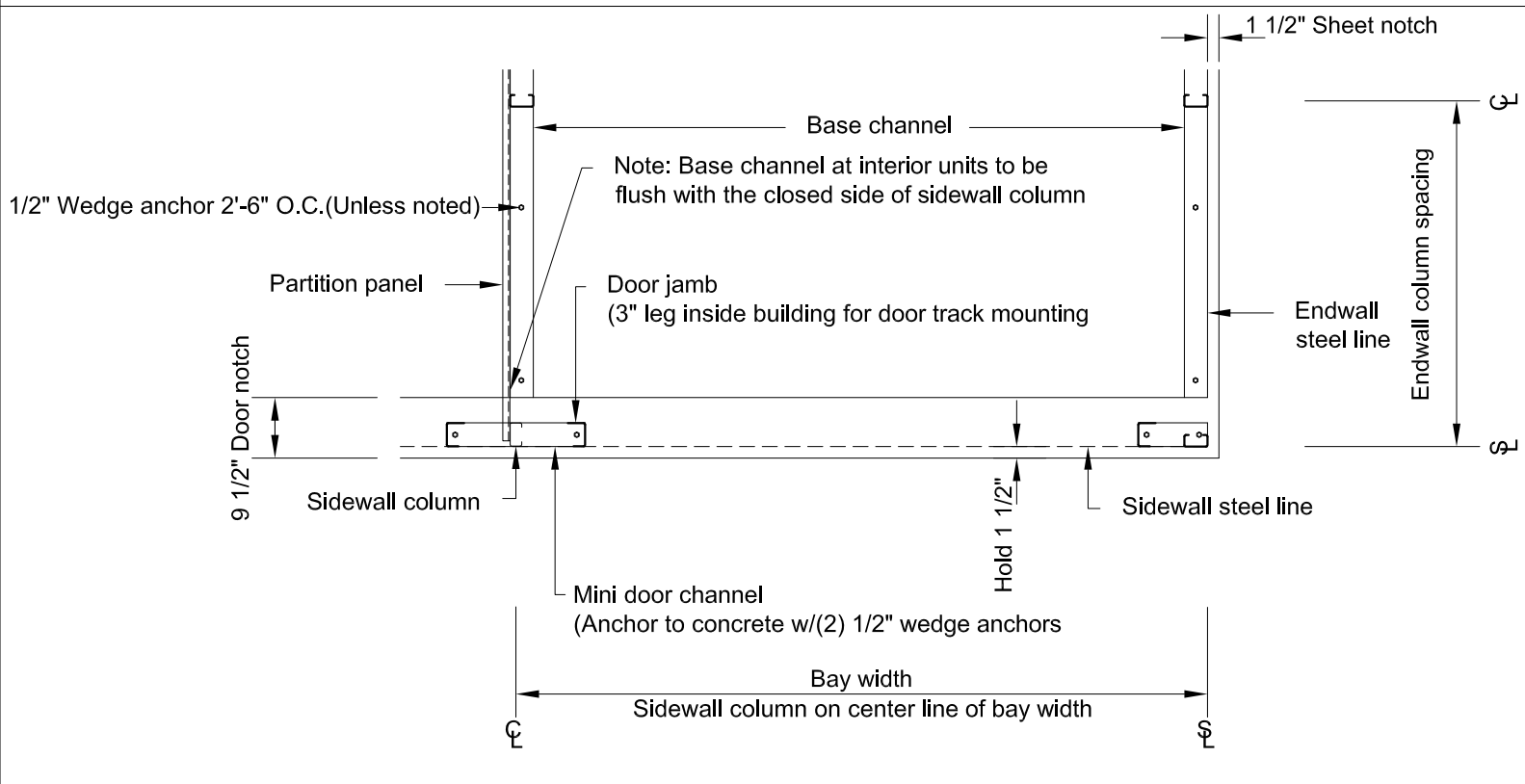
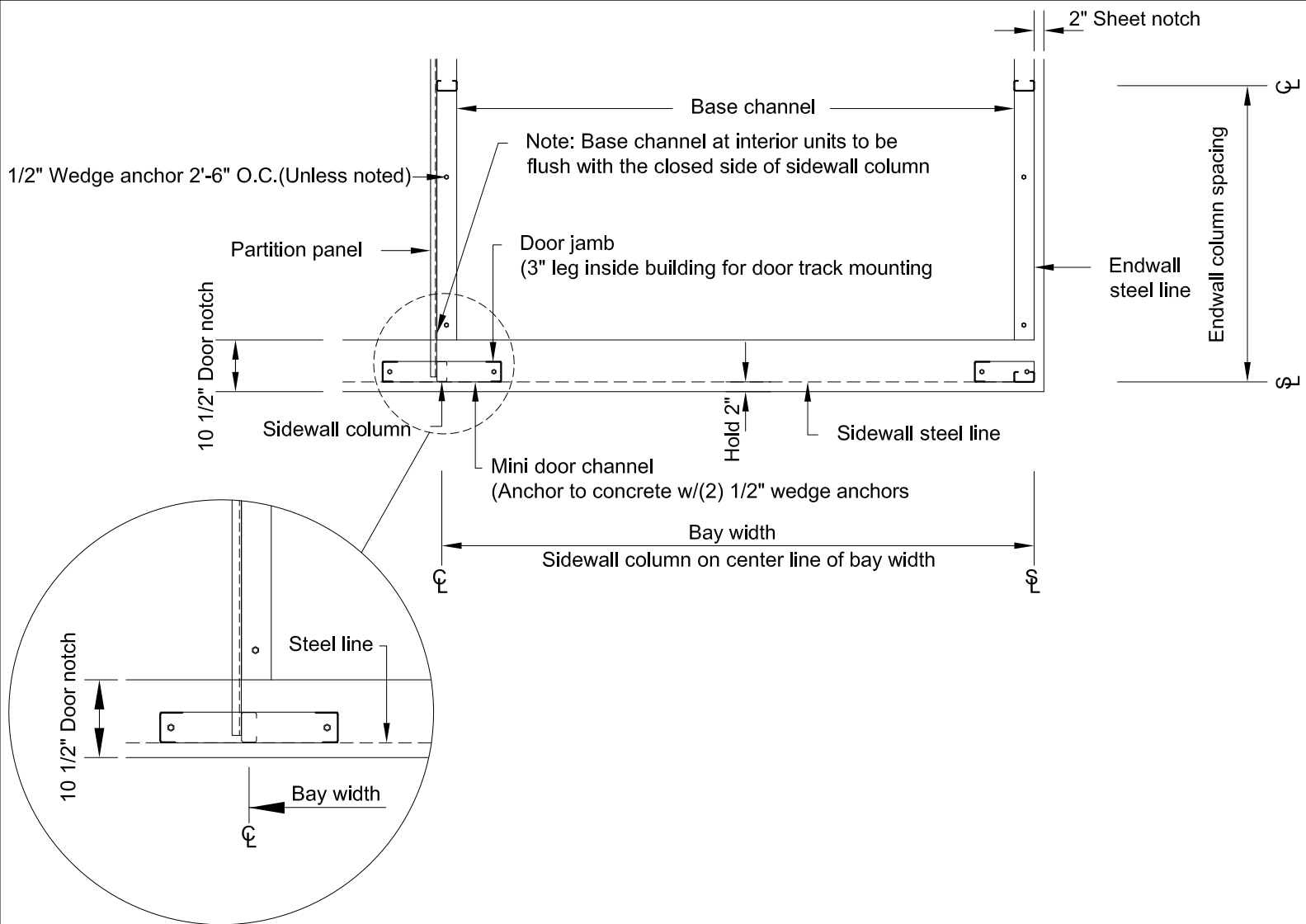
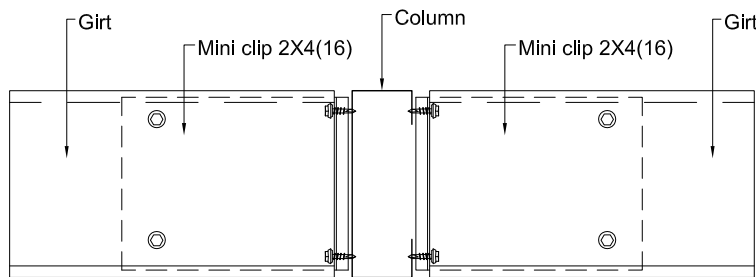
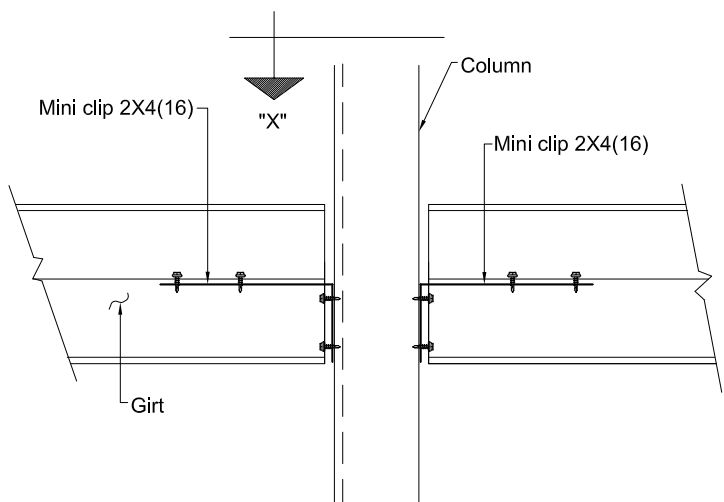


Table of Contents

- 1.) Base Channel Layout
- 2.) Wall Girt Assembly
- 3.) Wall Base with Panels
- 4.) Wall Base with Door Jambs
- 5.) Door Jambs with Panels
- 6.) Door Header Assembly
- 7.) Mullion Trim Assembly
- 8.) Sidewall Framing with Door Jambs
- 9.) Corner Trim Assembly
- 10.) Stepdown Framing Detail
- 11.) Stepdown Sheeting and Trim Detail
- 12.) Support Cee Installation Detail
- 13.) Sidewall Framing with Gutter or Eave Trim
- 14.) Endwall Framing at Rake
- 15.) High Side Condition (Single Slope Only)
- 16.) Longitudinal Partition Wall Assembly
- 17.) Lateral Partition Wall Assembly
- 18.) Fastener Spacing and Pattern
- 19.) Roof Panels at Ridge and Laps
- 20.) Lateral Roof Strapping Installation
- 21.) Roof and Wall "X" Strapping Installation
- 22.) Pitch Maker and Pitched Eave Channel

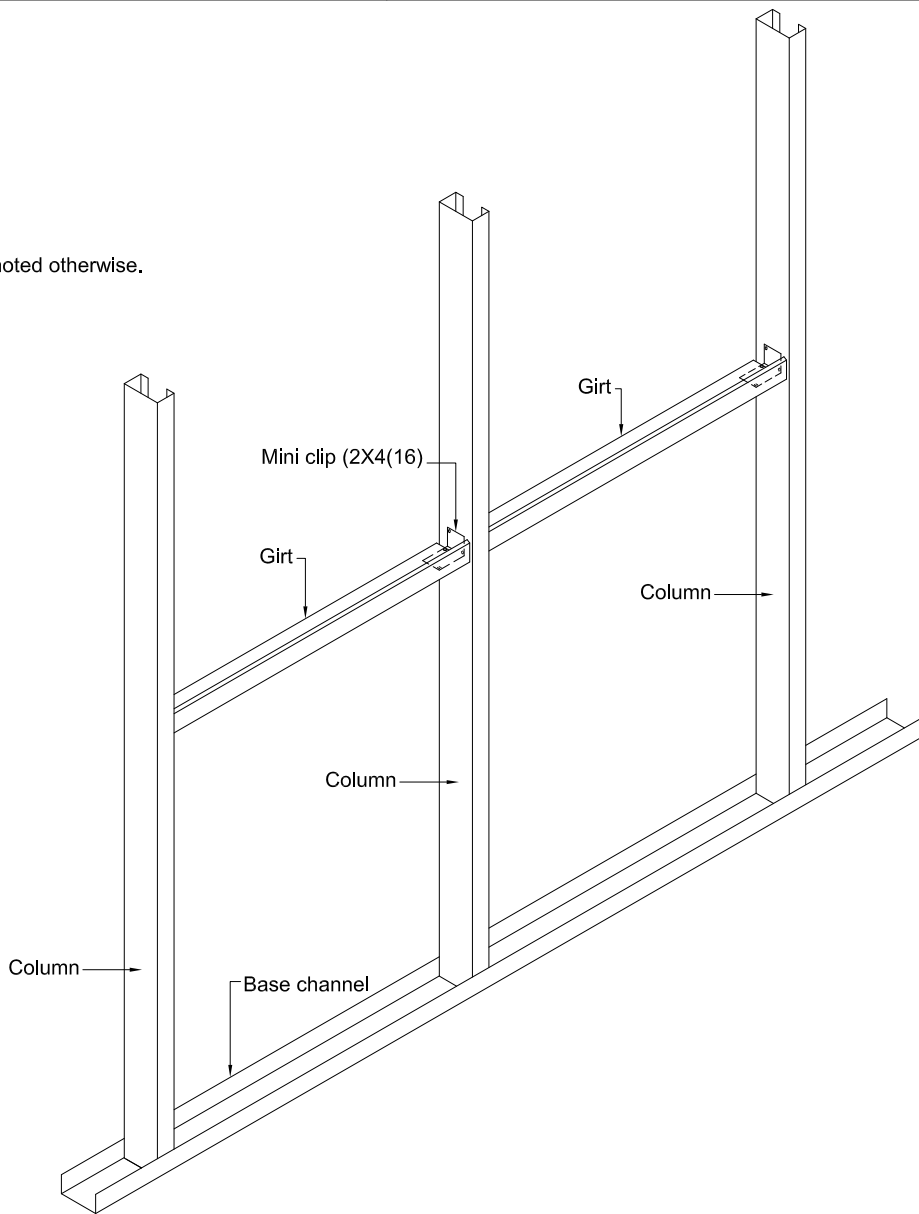


Note : Use (1) #12 X 3/4" self driller in each location of mini clip as shown.
Space the fasteners as far apart as possible.

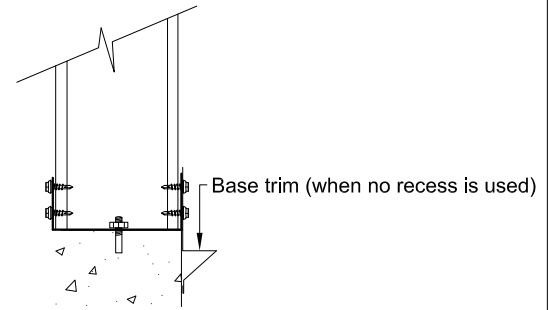
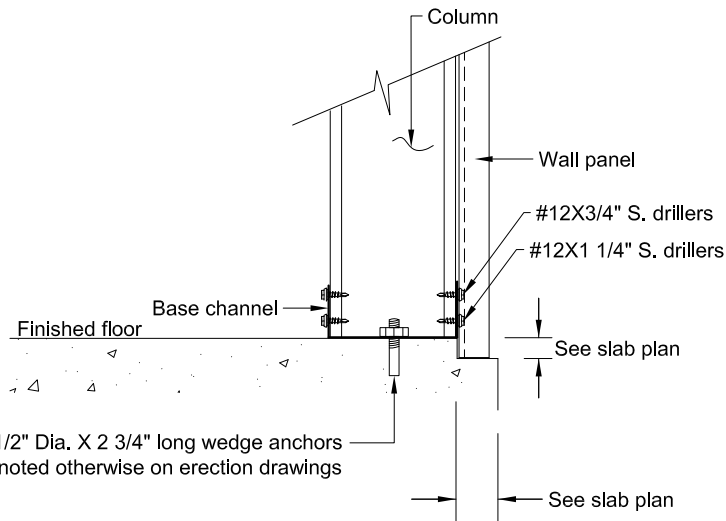


SECTION "X"

Note : (4) Screws per clip unless noted otherwise.



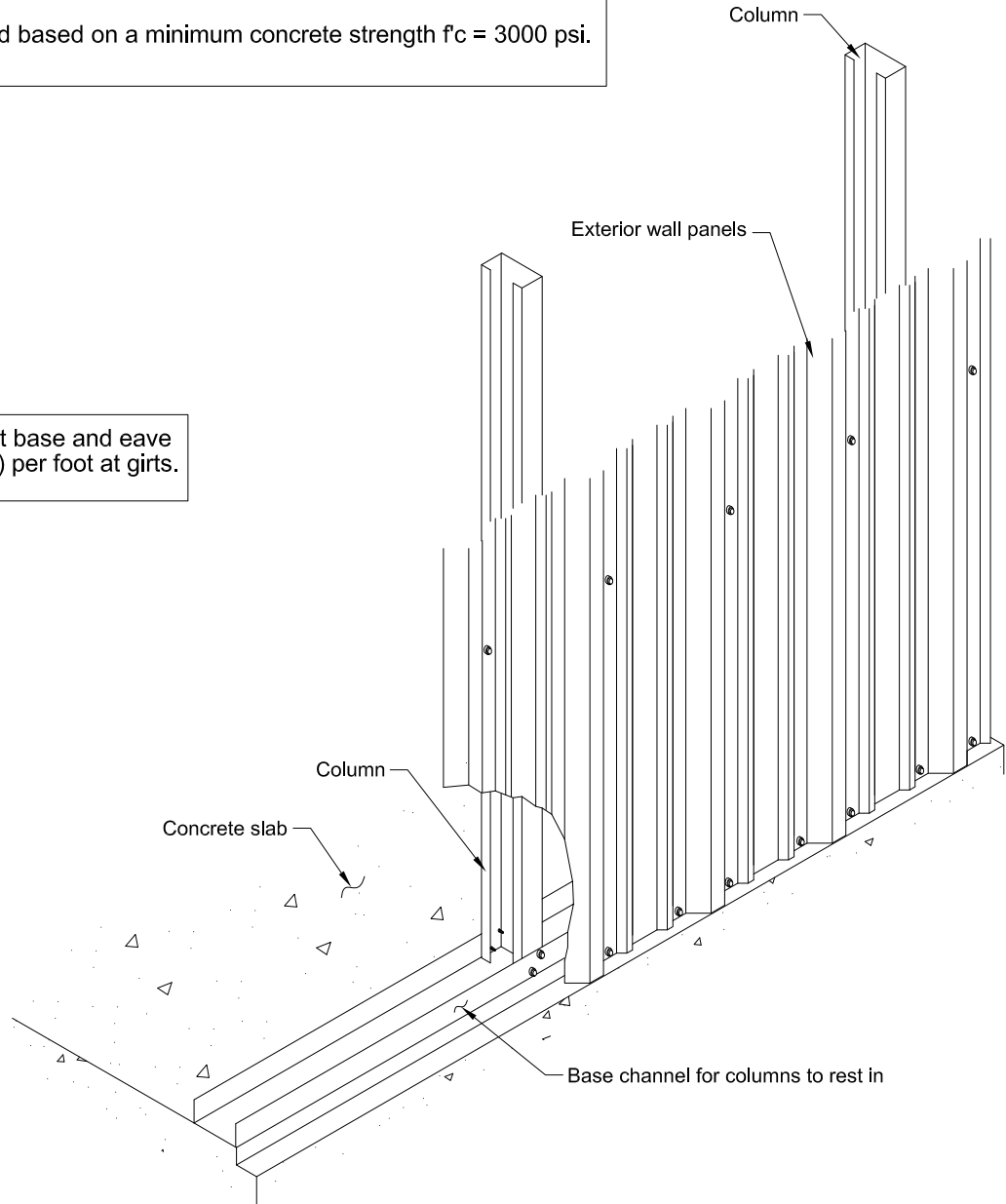
Fasten base channel to column (2) #12X3/4" S. drillers on each side of column when 4" and 6" purlins are used.
 Fasten base channel to column (3) #12X3/4" S. drillers on each side of column when 8" purlins are used.

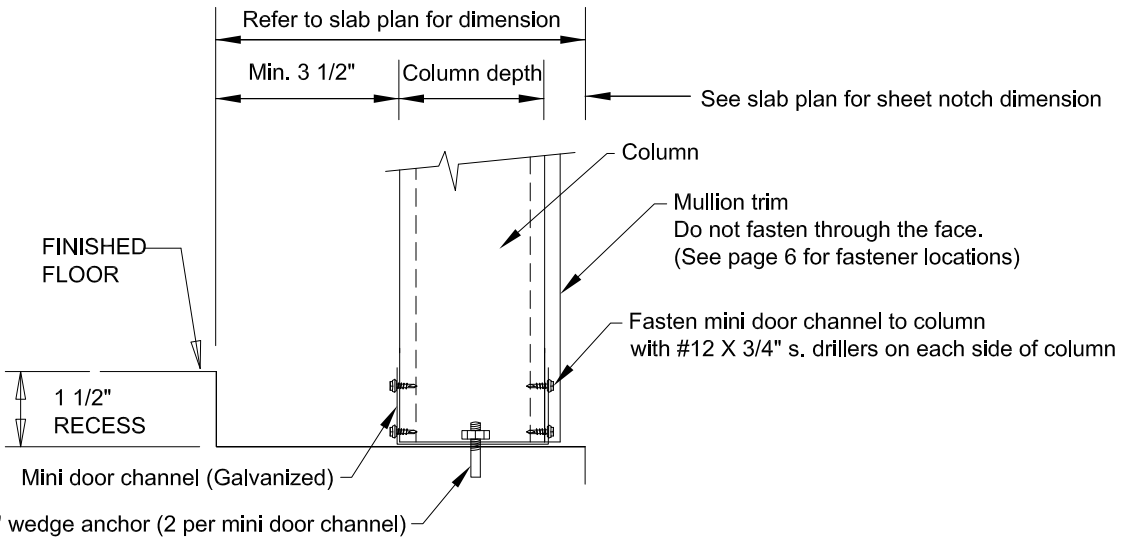


Alternate detail

Note : 1/2" X 2 3/4" wedge anchors are designed based on a minimum concrete strength $f_c = 3000$ psi.

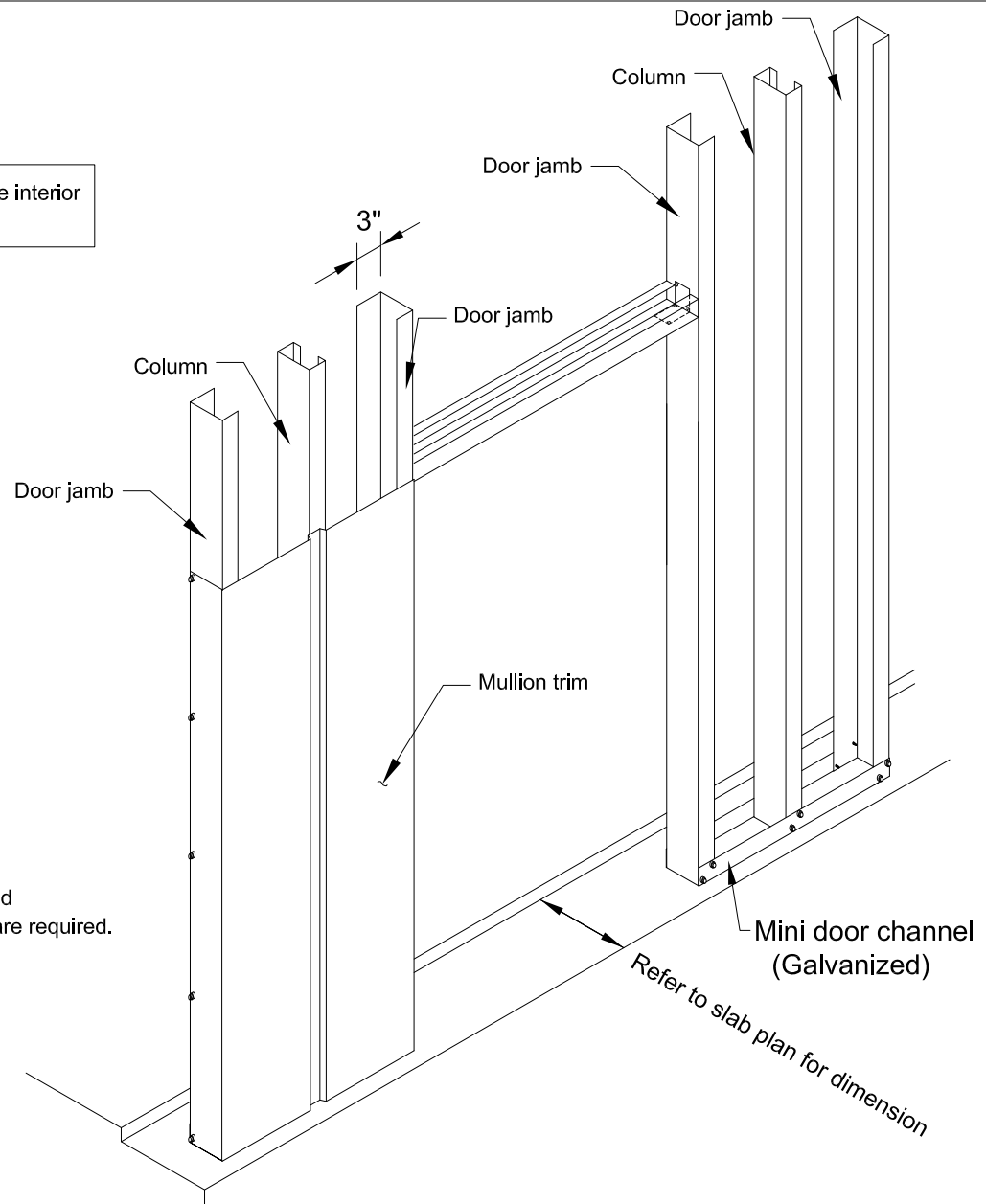
Use (2) #12 X 1 1/4" S. drillers per foot at base and eave for exterior wall panel attachment and (1) per foot at girts.



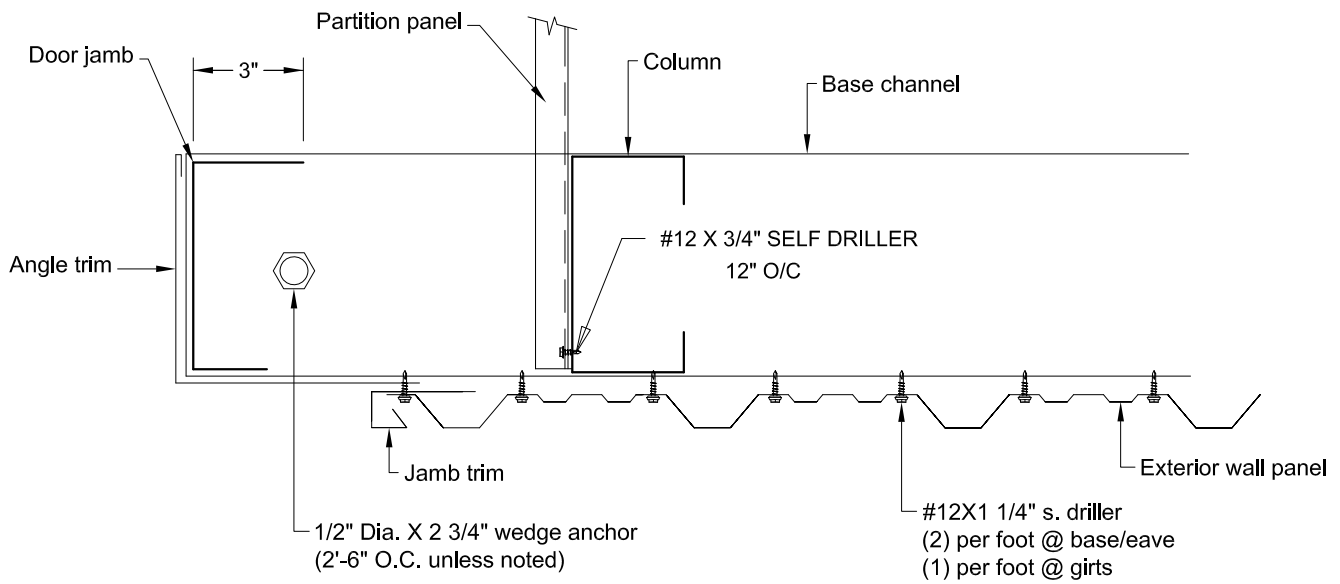


Fasten base channel to column (2) #12X3/4" S. drillers on each side of column when 4" and 6" purlins are used.
Fasten base channel to column (3) #12X3/4" S. drillers on each side of column when 8" purlins are used.

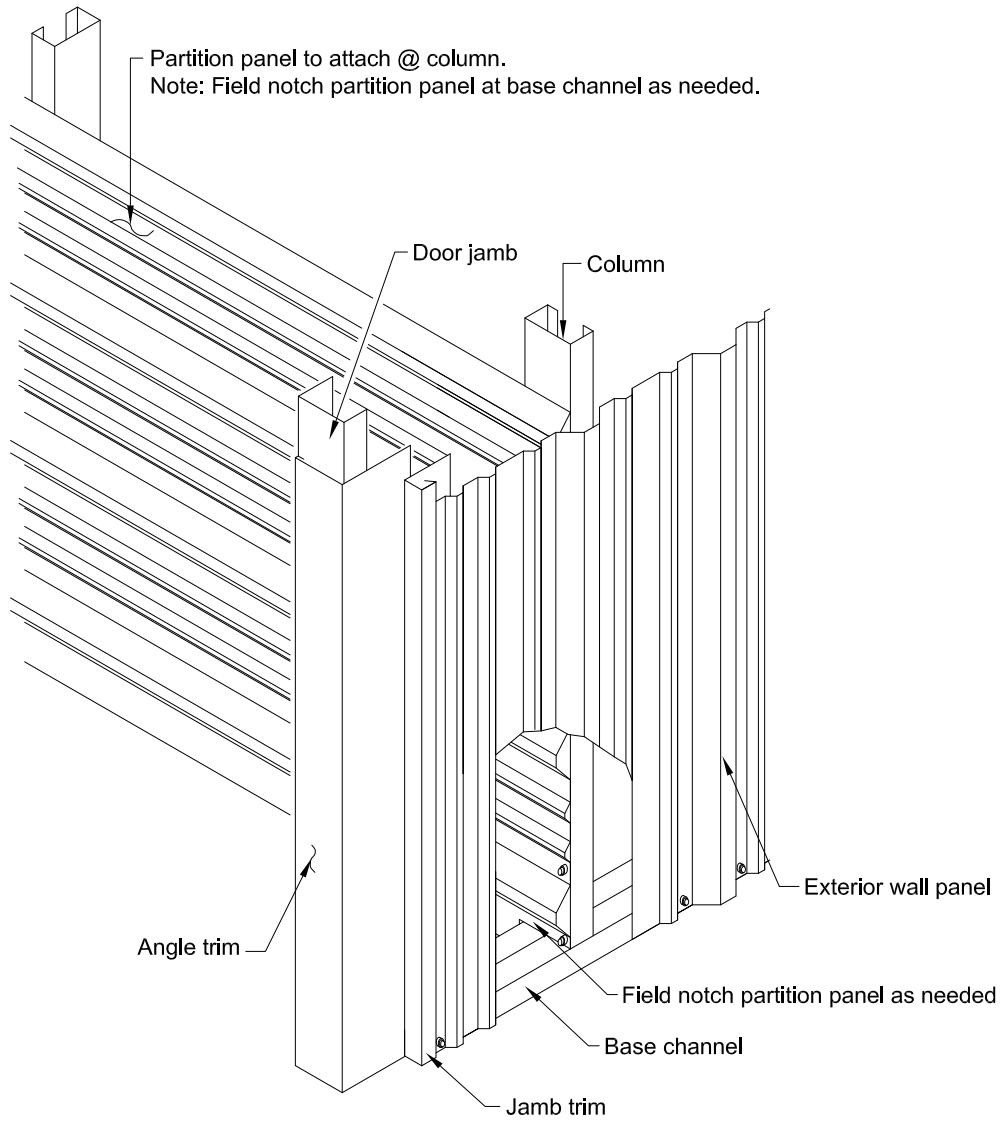
Note: The 3" leg of the door jamb must be on the interior of the building for door track mounting.

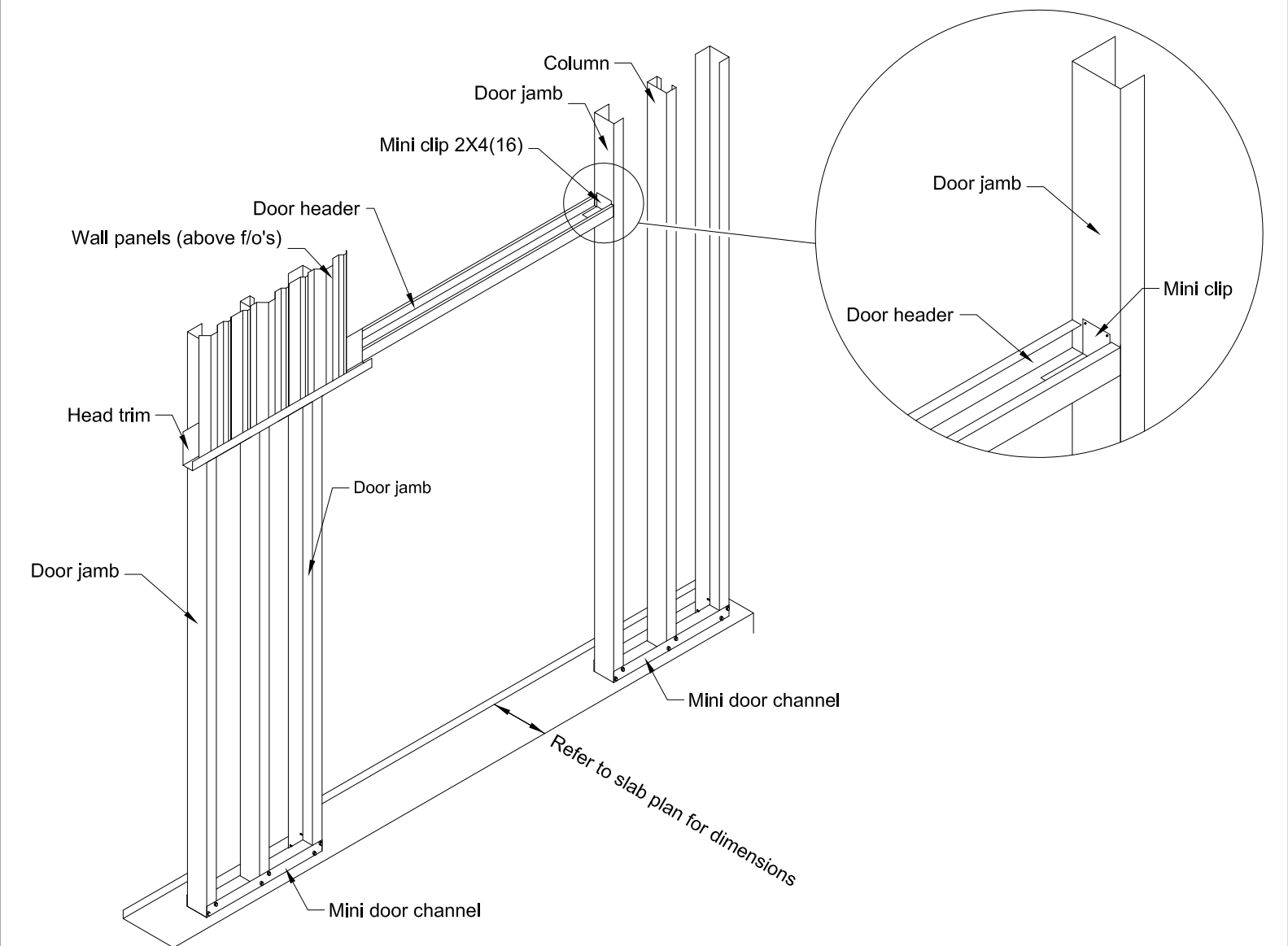
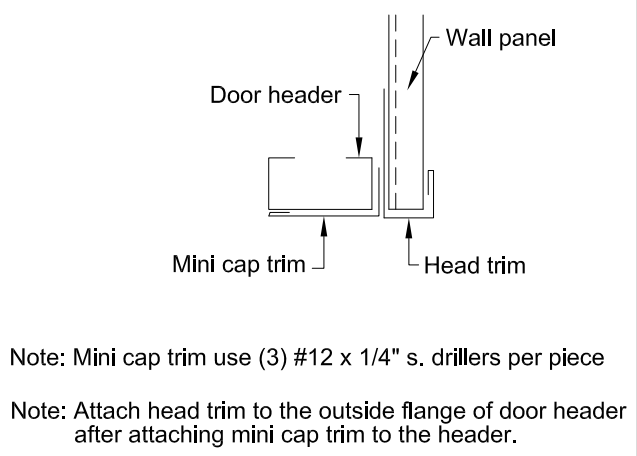
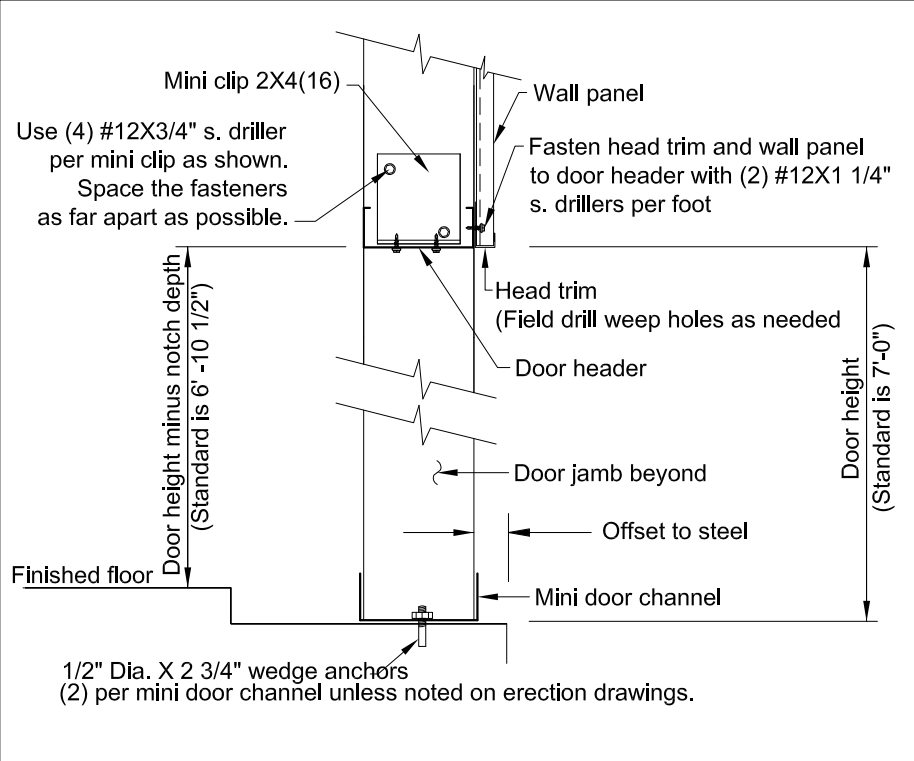


Note: Galvanized mini door channels are stocked in 1'-0" & 2'-0" lengths when 4" columns are required. All others will be red oxide primer.

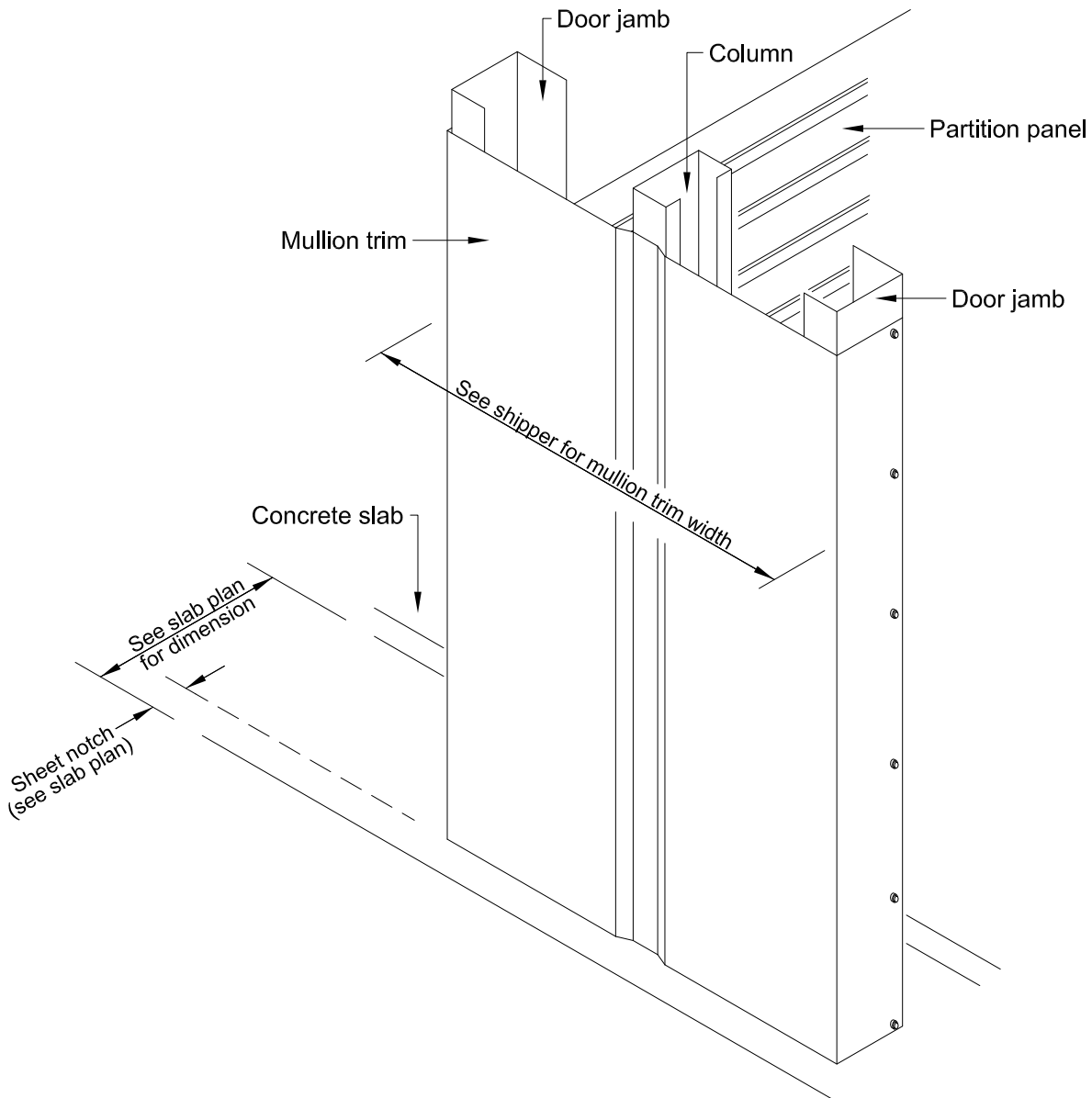
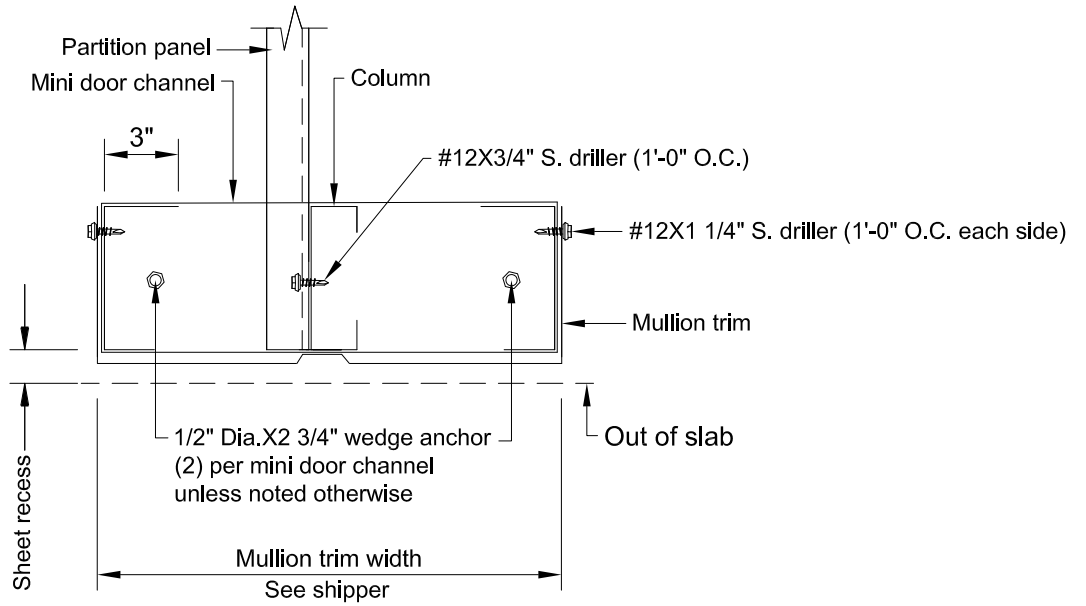


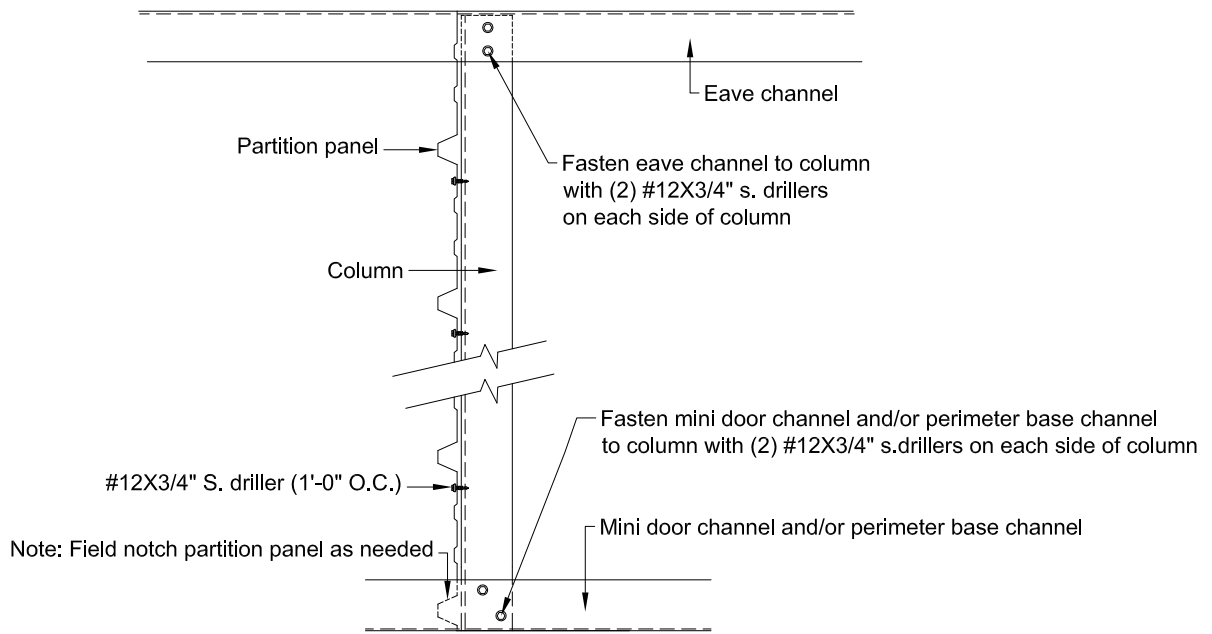
Note: The 3" leg of the door jamb must be on the inside of the building for door track mounting.



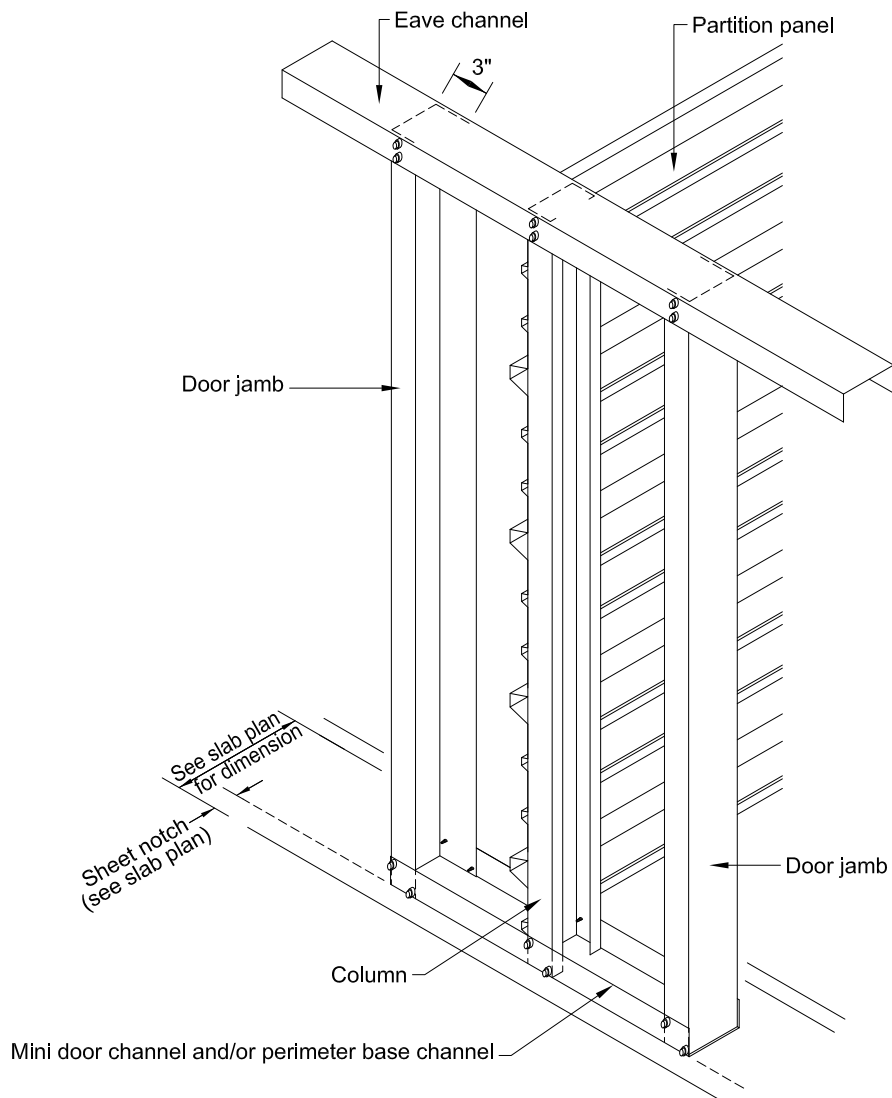


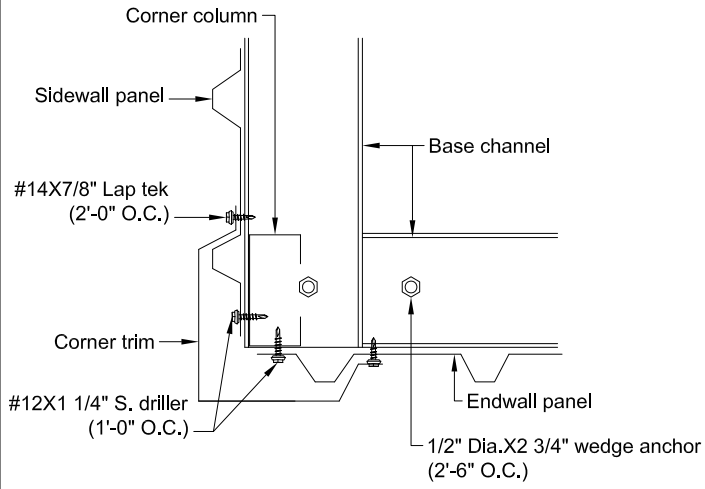
Note: The 3" leg of the door jamb must be on the interior of the building for door track mounting.



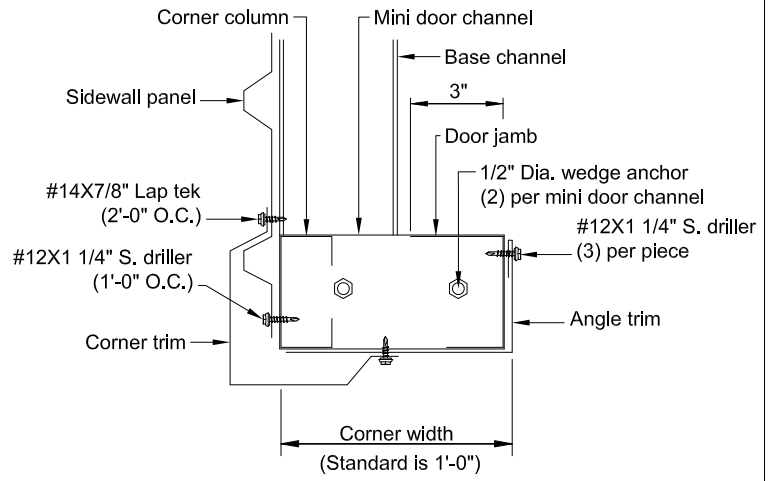


Note: The 3" leg of the door jamb must be on the interior of the building for door track mounting.

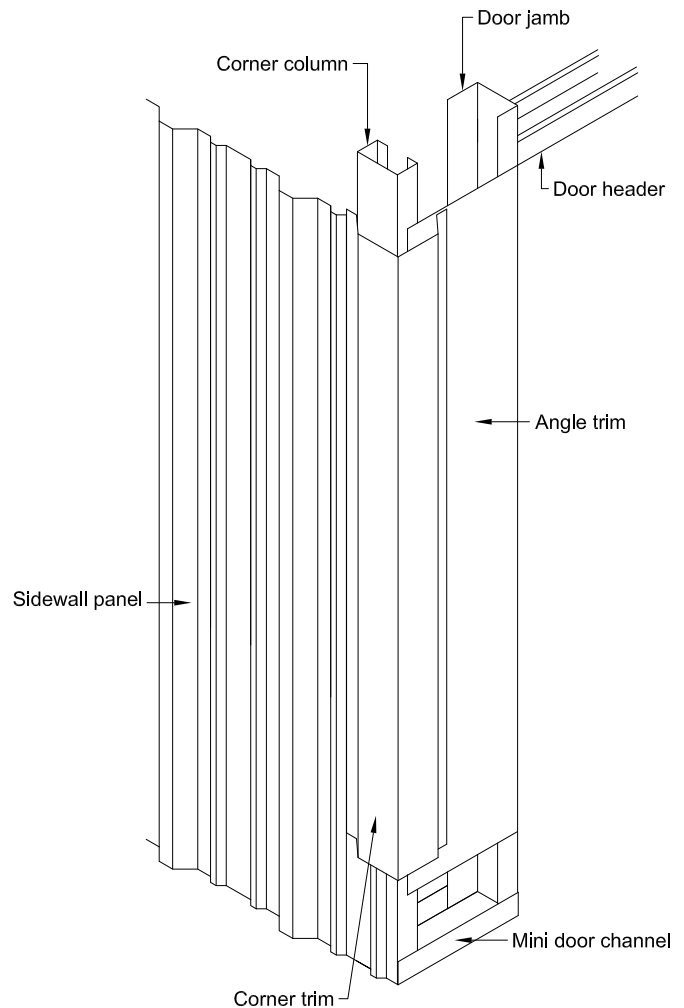
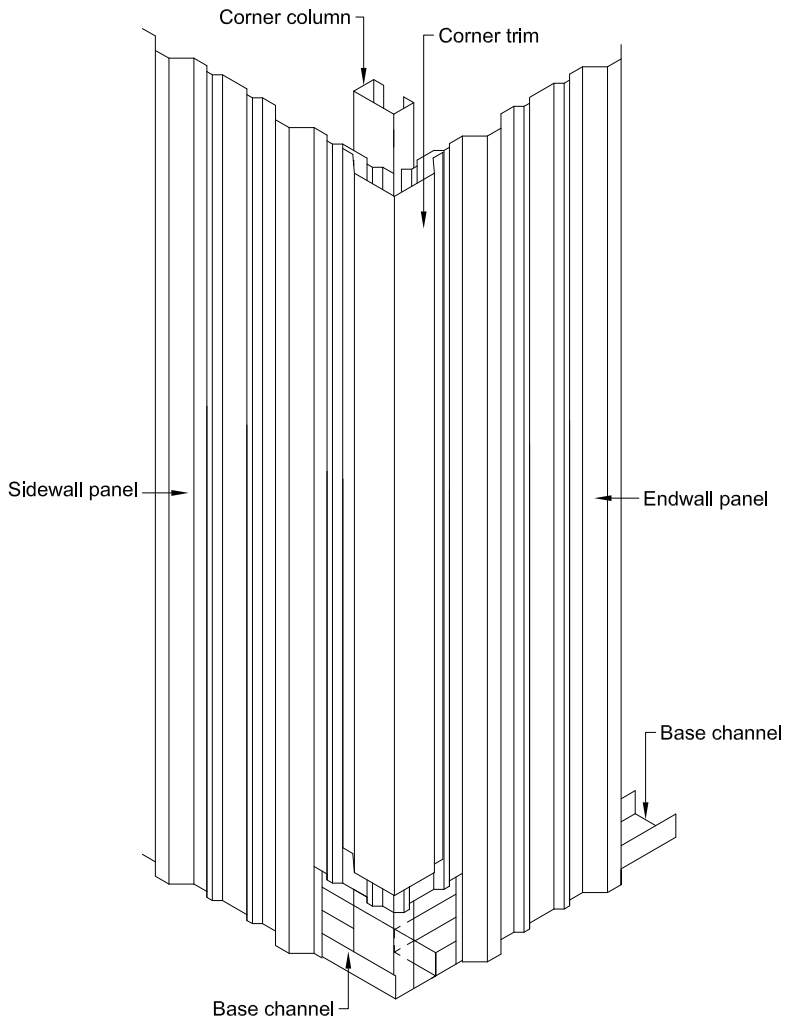


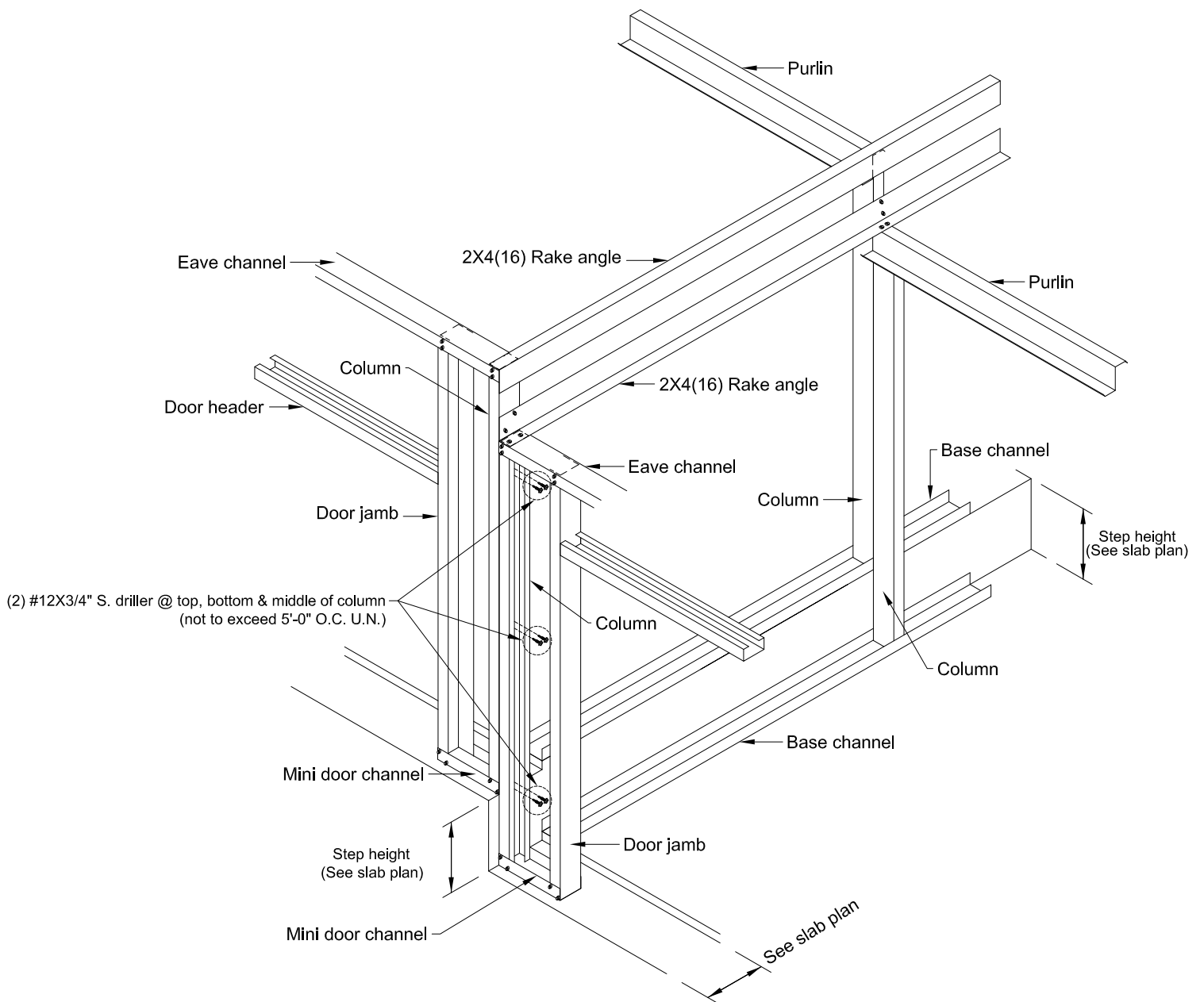
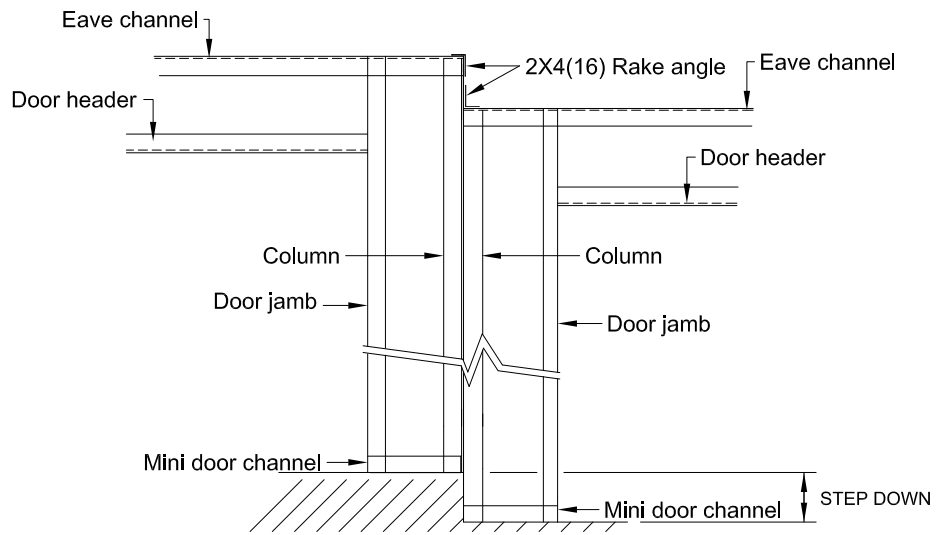


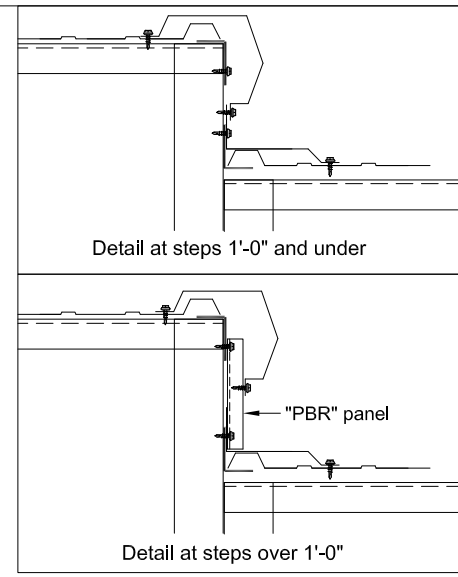
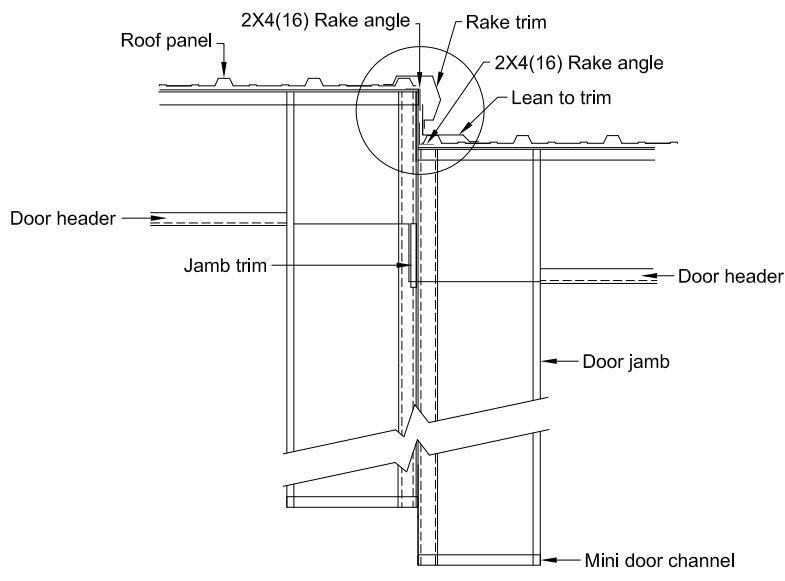
Corner trim assembly without door jambs



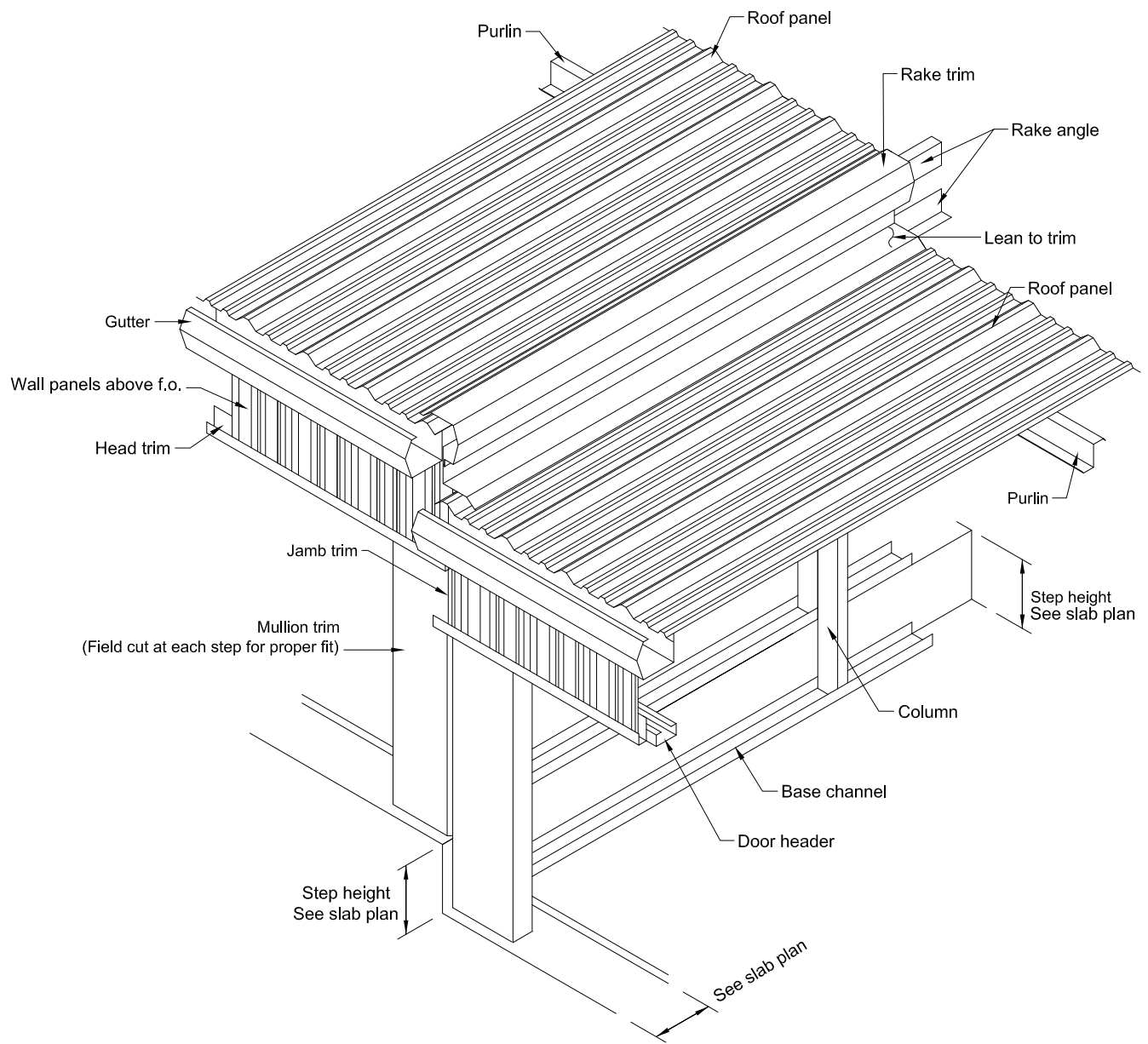
Corner trim assembly at door jambs

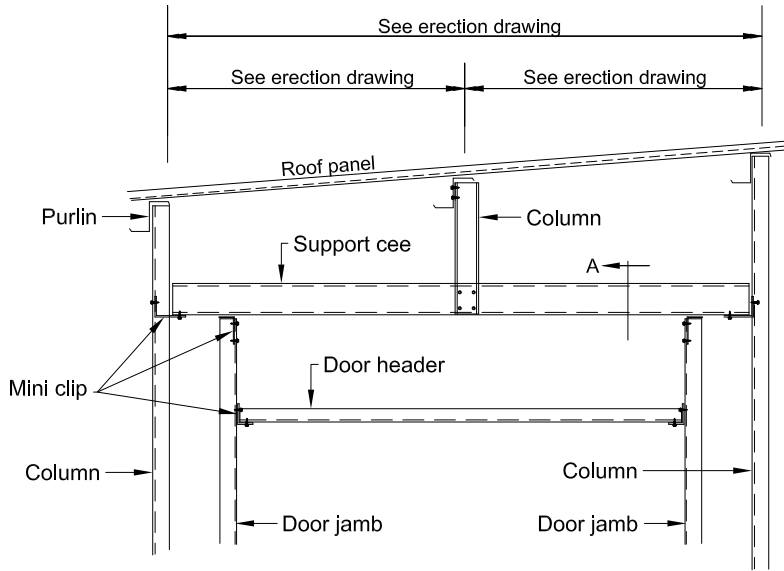




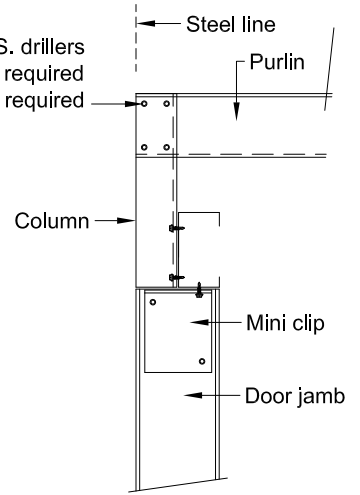


Note: Field cut mullion trim at each step for proper fit (See below)



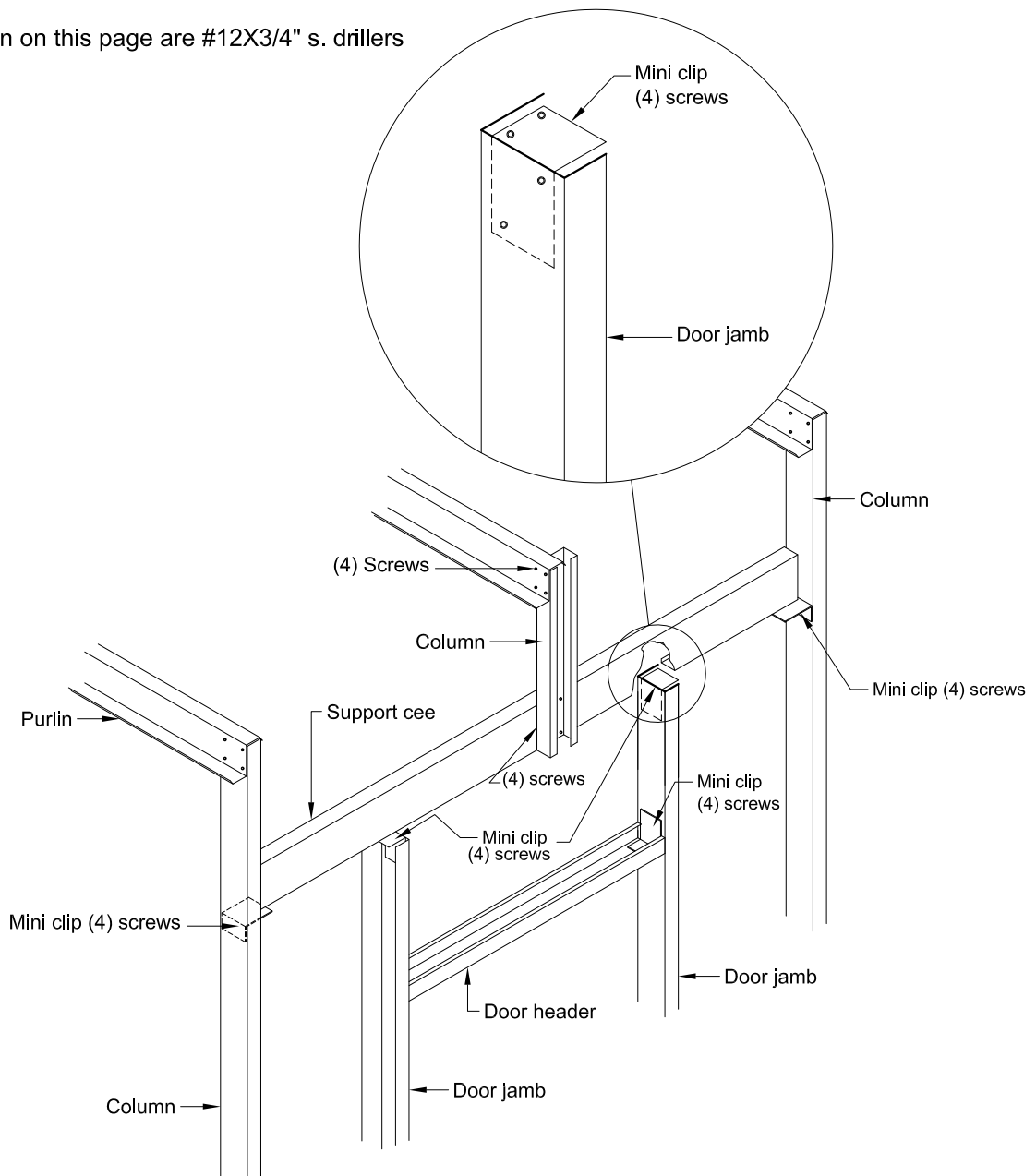


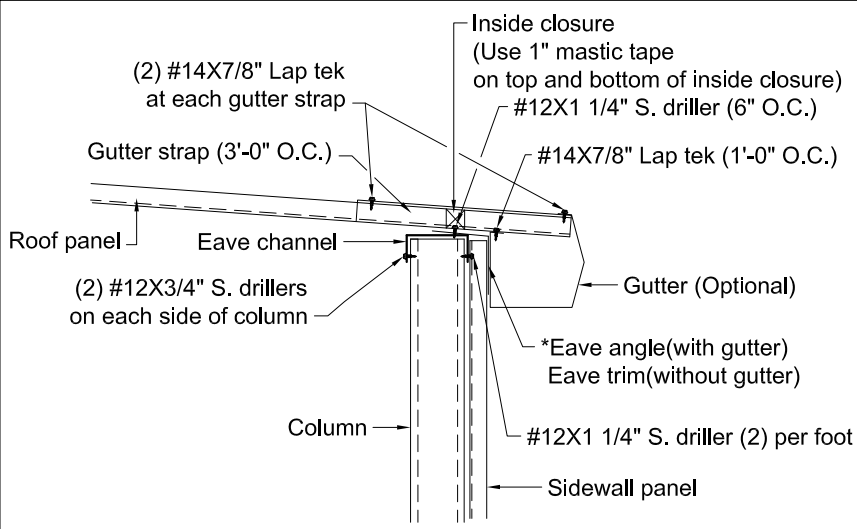
#12X3/4" S. drillers
 Use (4) when 4" or 6" purlins are required
 Use (6) when 8" purlins are required



Section "A"

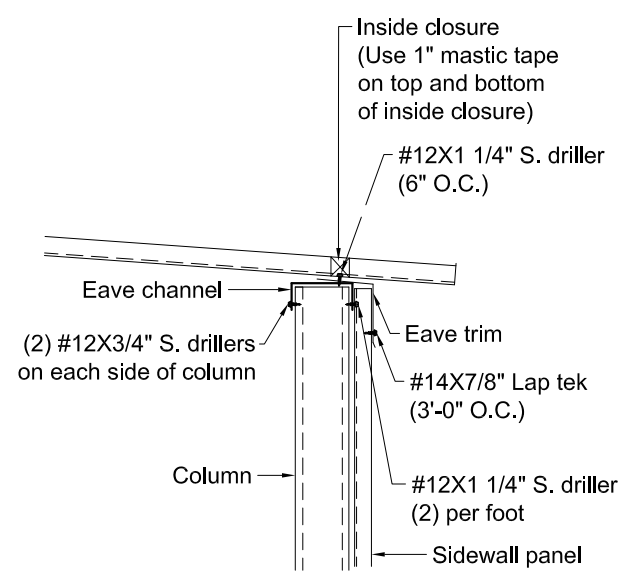
Note: All fasteners shown on this page are #12X3/4" s. drillers





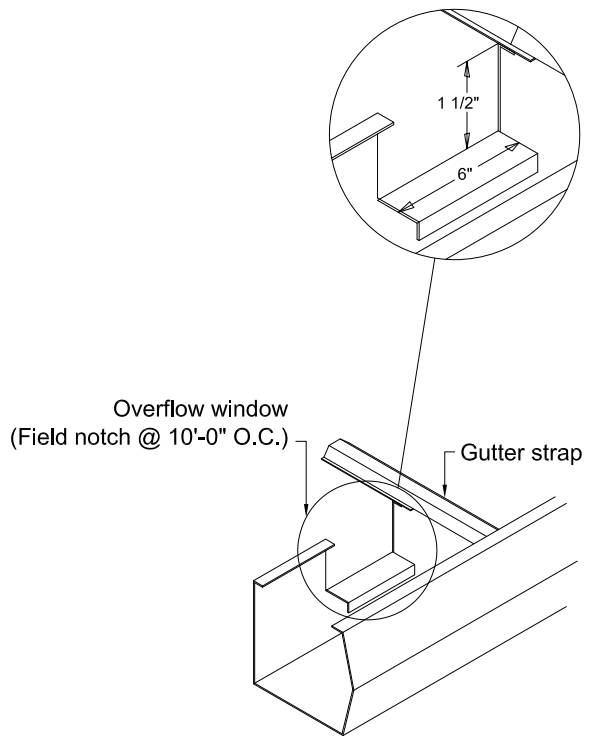
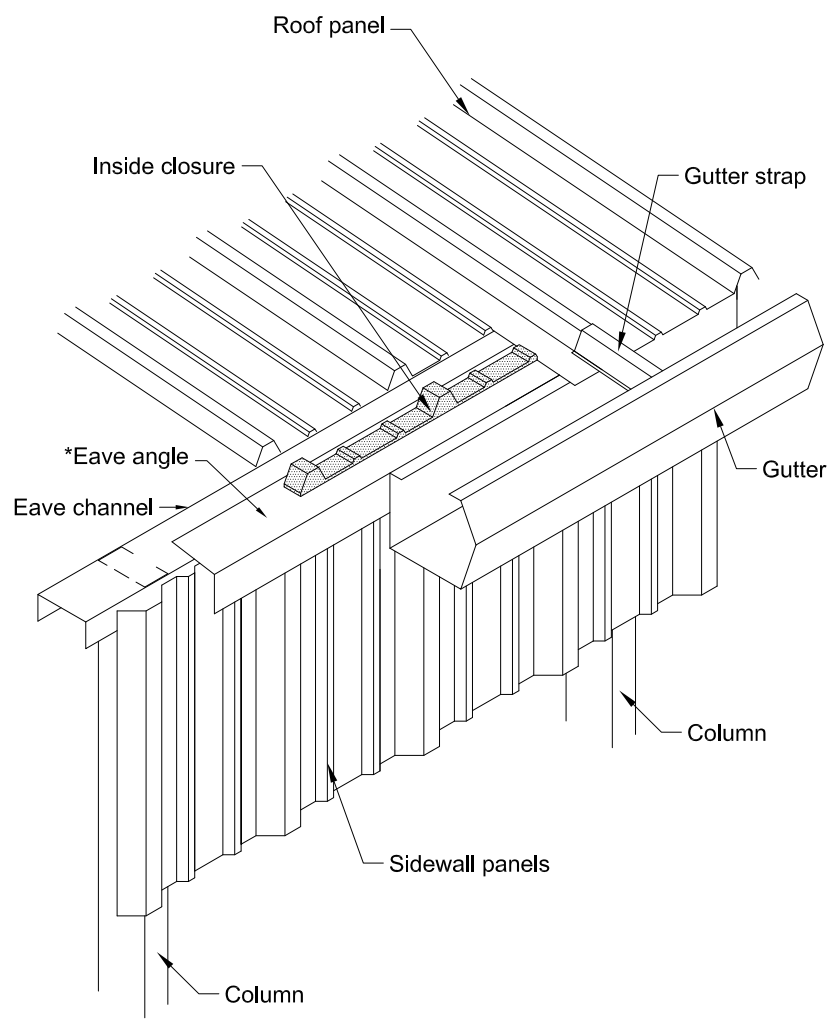
* Note: #2 Eave angle may or may not be the same color as the other trim.

With Gutter

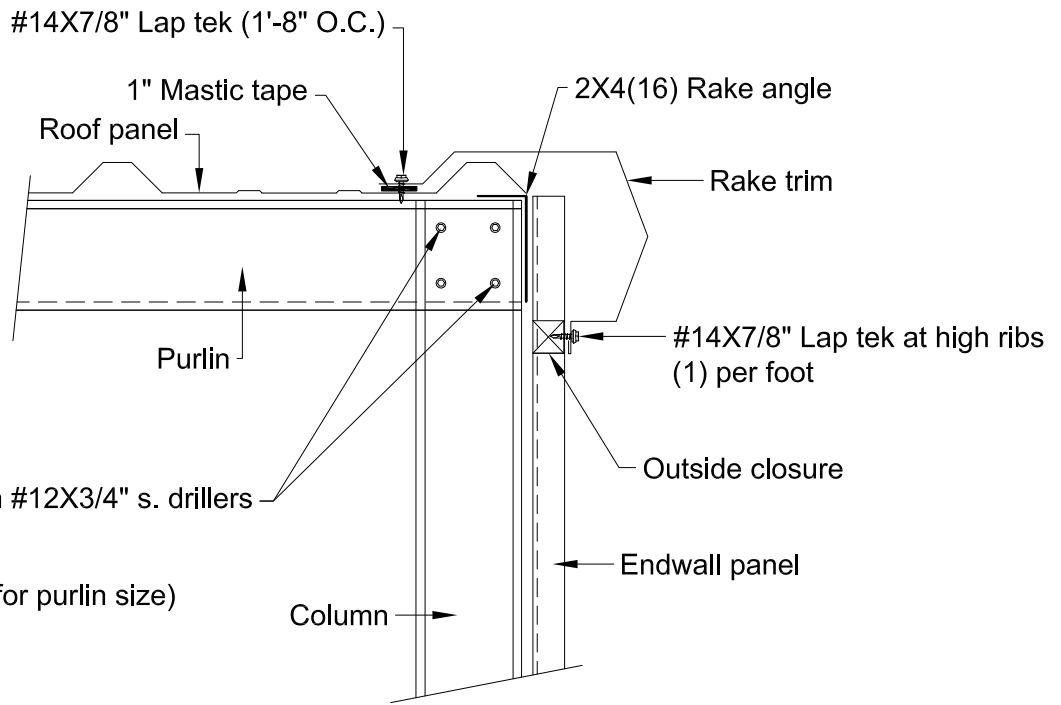


With Eave Trim

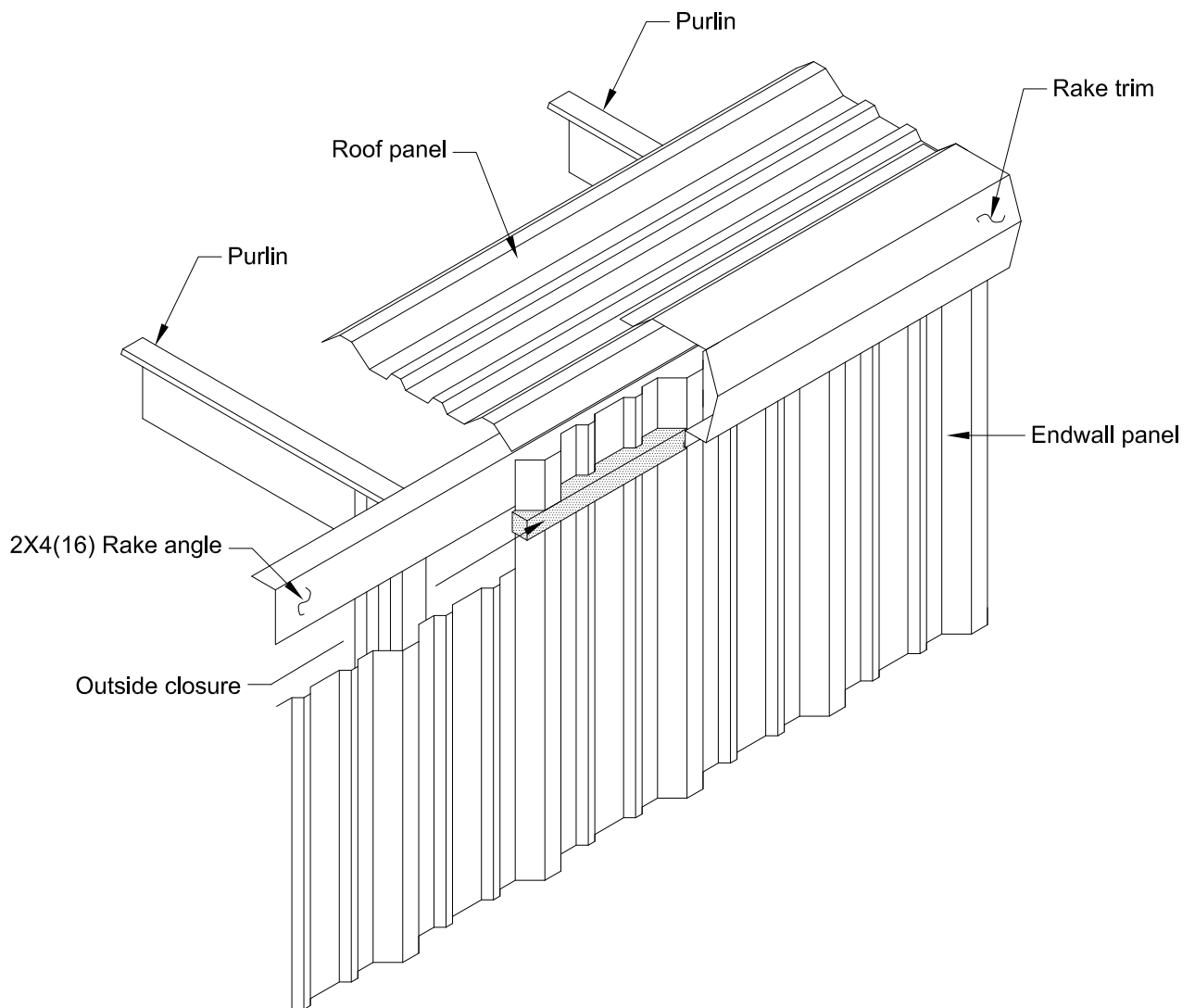
*Note: Replace eave angle with eave trim if there is no gutter.

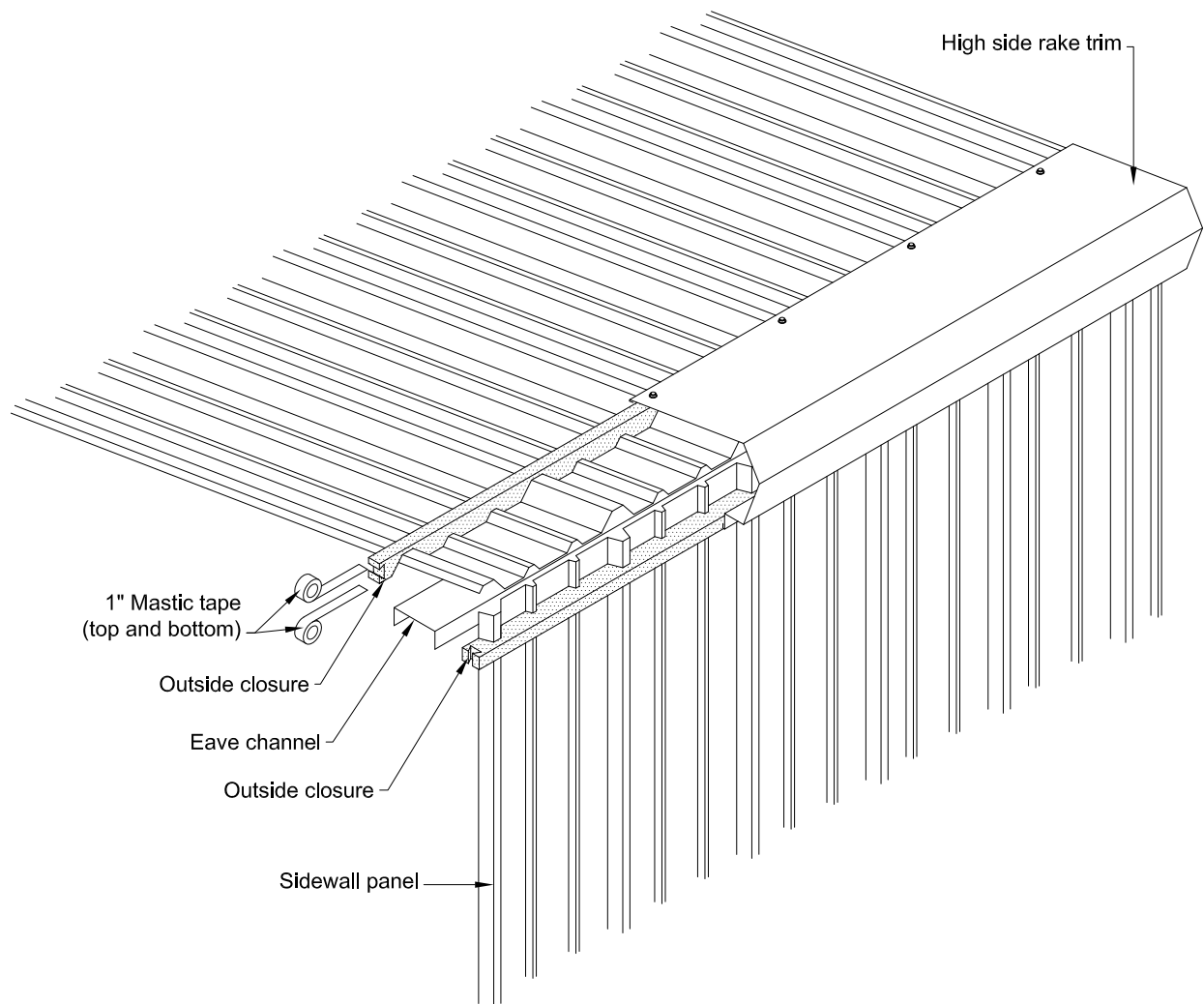
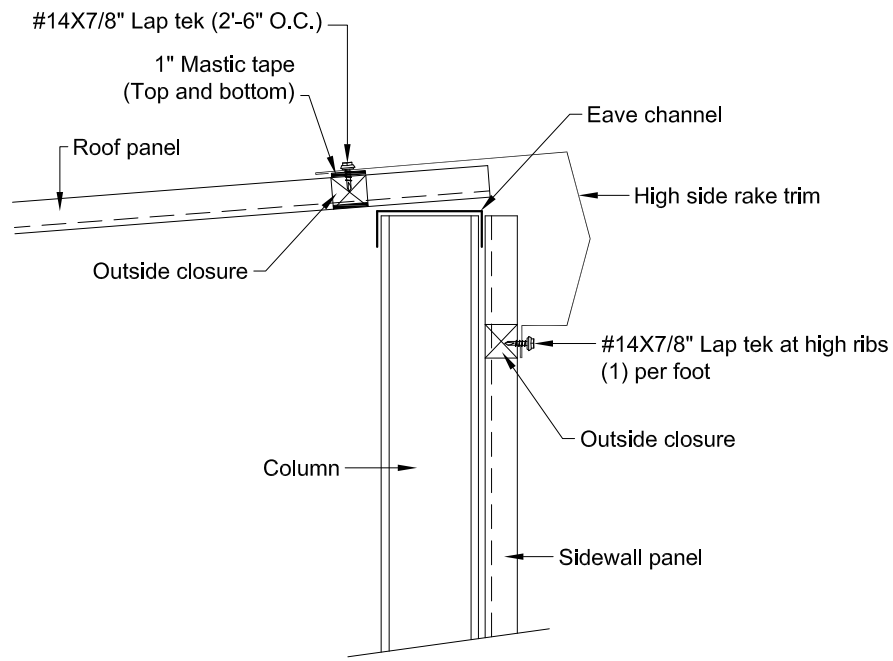


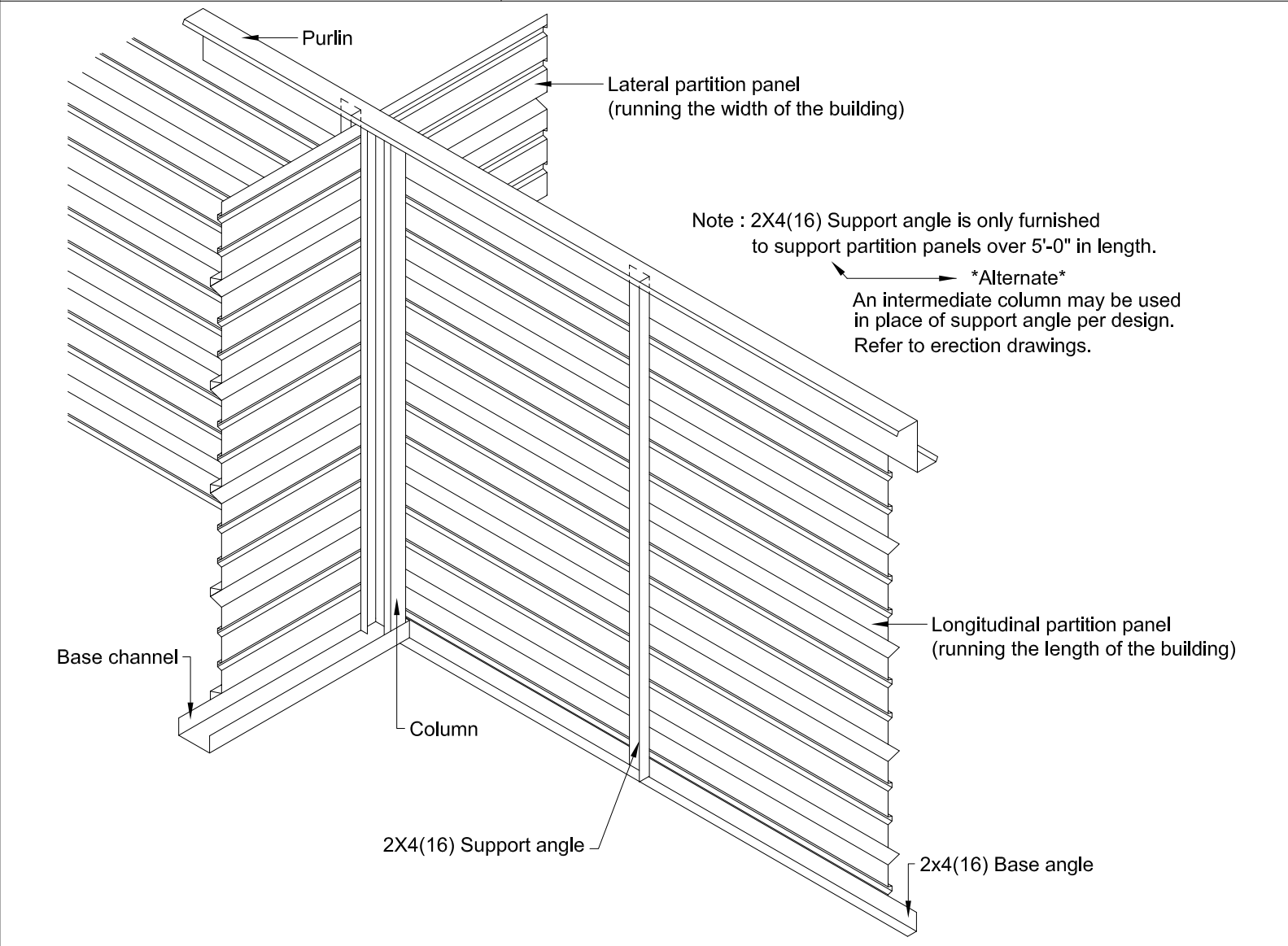
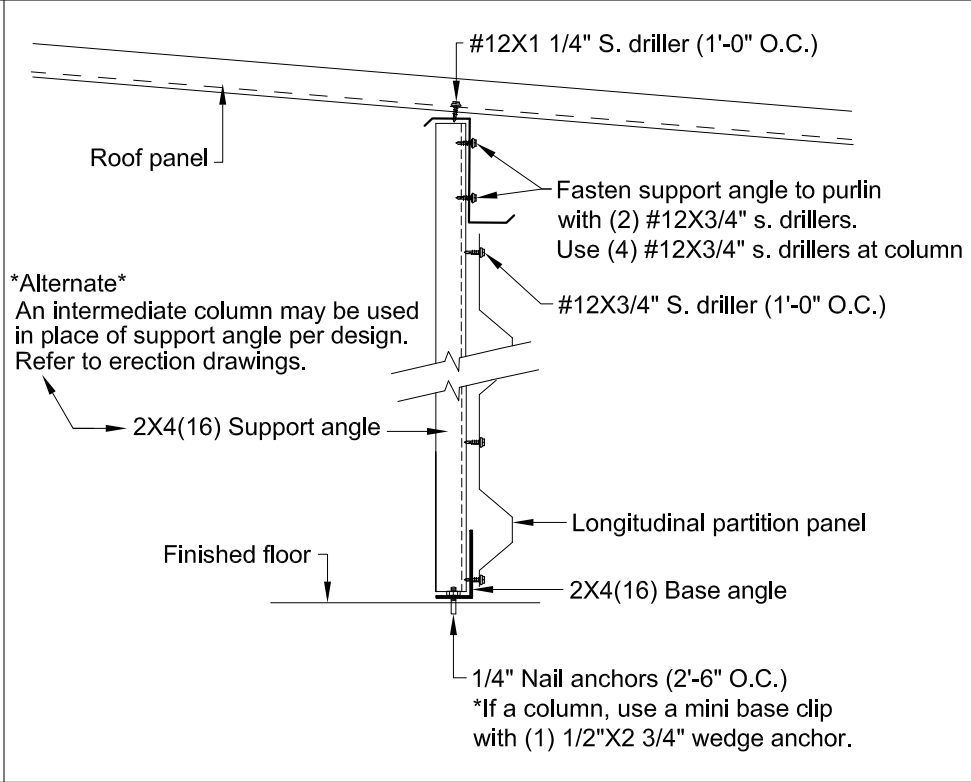
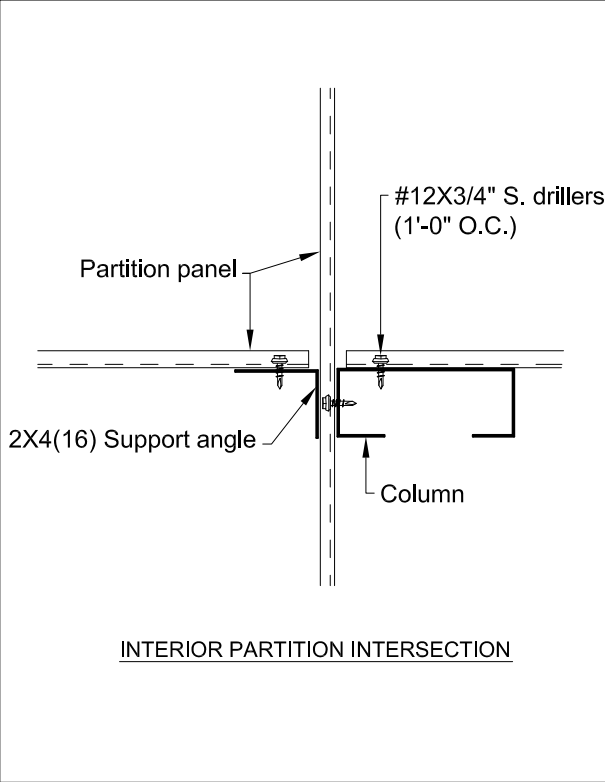
Optional gutter overflow detail

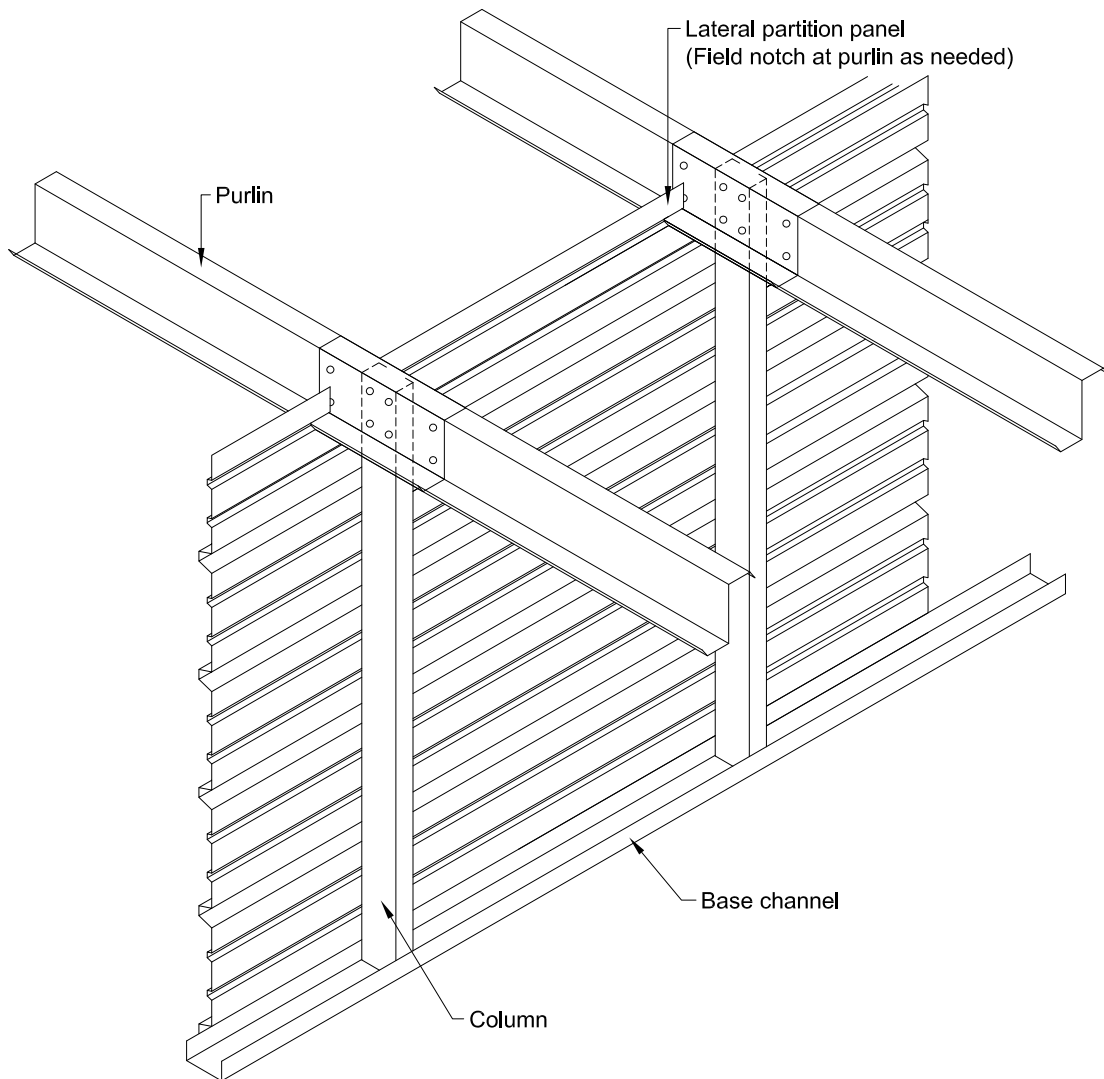
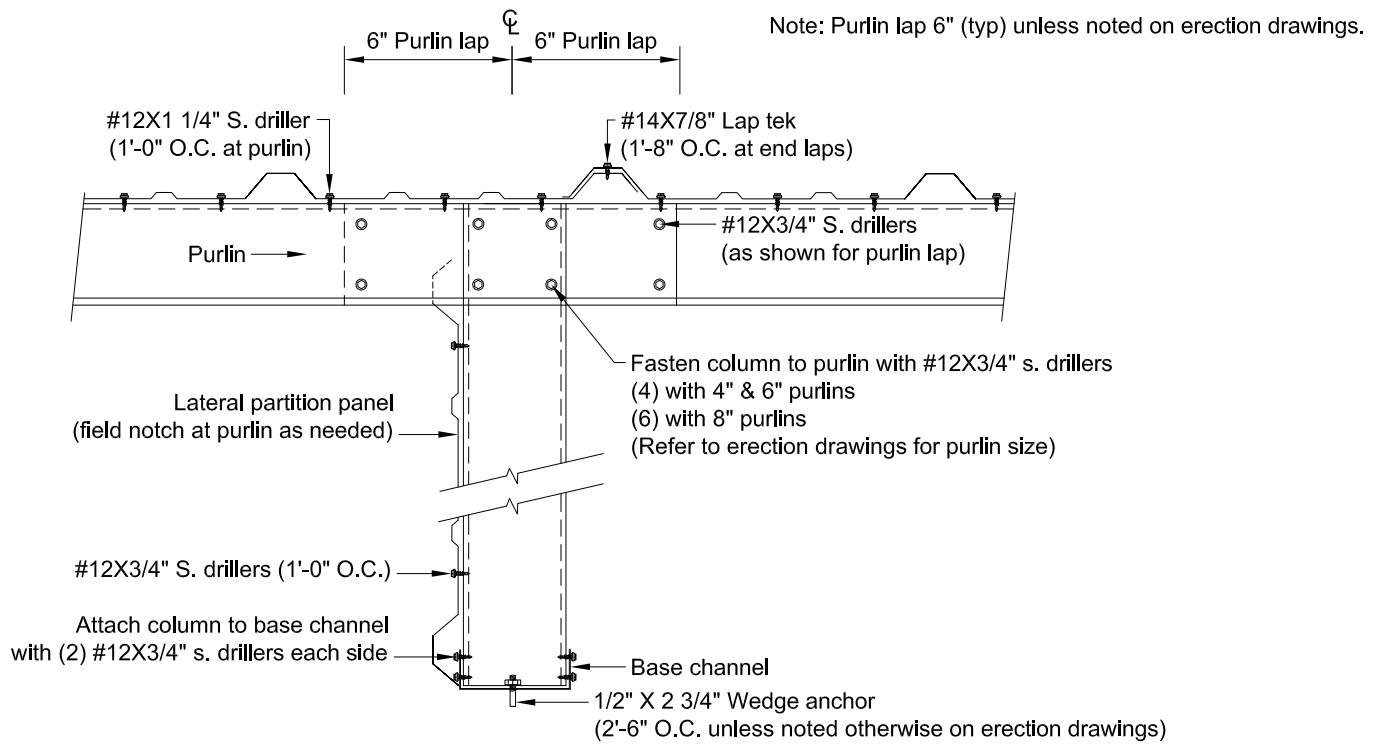


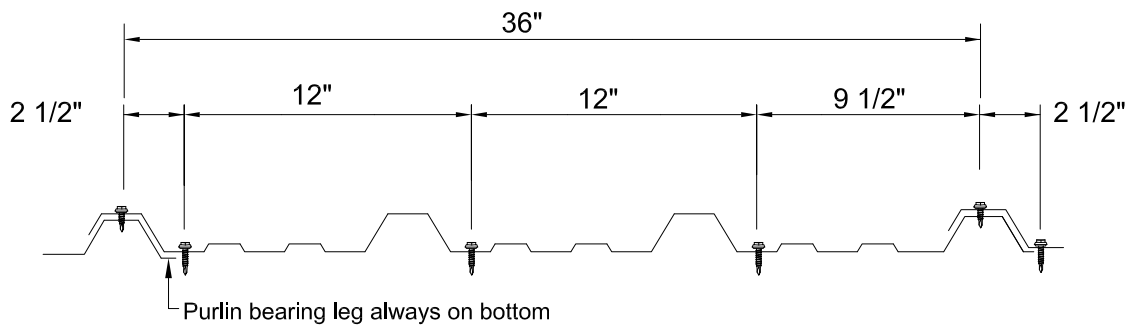
Fasten column to purlin with #12X3/4" s. drillers
 (4) with 4" & 6" purlins
 (6) with 8" purlins
 (Refer to erection drawings for purlin size)



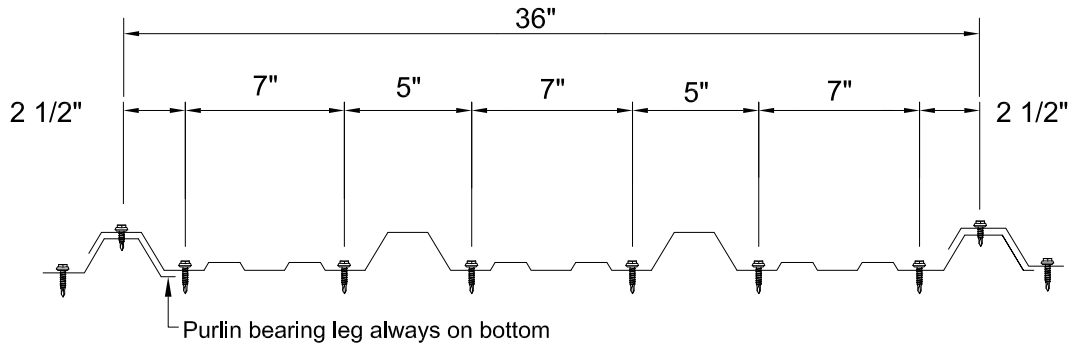




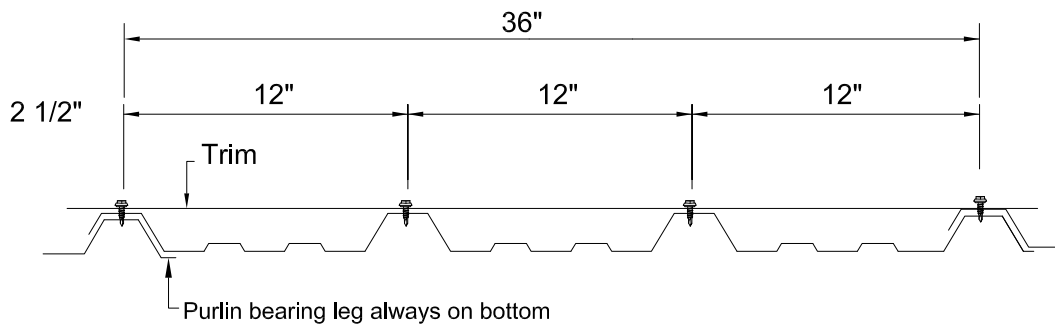




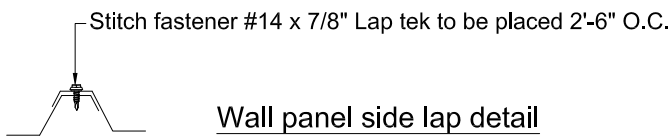
Pattern #1
At intermediate support



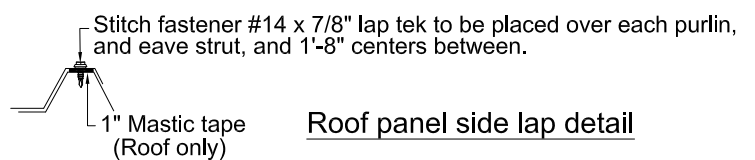
Pattern #2
At eave or endlap



Pattern #3
At trim at roof



Wall panel side lap detail

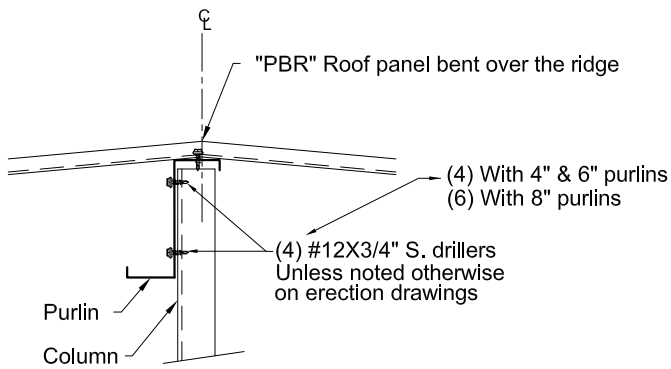


Roof panel side lap detail

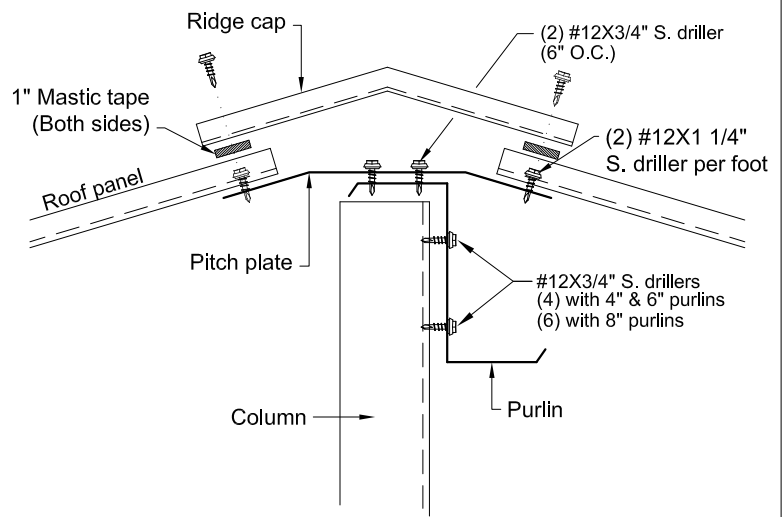
Warning! The roof should be swept clean of any drill shavings at the end of each day to prevent rust.

Wall Panel Fasteners - Panel to girt connections to be #12-14x1 1/4" self drilling hex head with 5/8" O.D. washer 12" O.C.
 Spacing at base, eave and endlaps to be in a 5-7-5-7 repeating pattern.
 Spacing for panel to panel connections to be 2'-6" O.C. with a fastener located over each girt.
Girts - No. 16 MSG min. gauge steel. (55 ksi minimum yield strength)

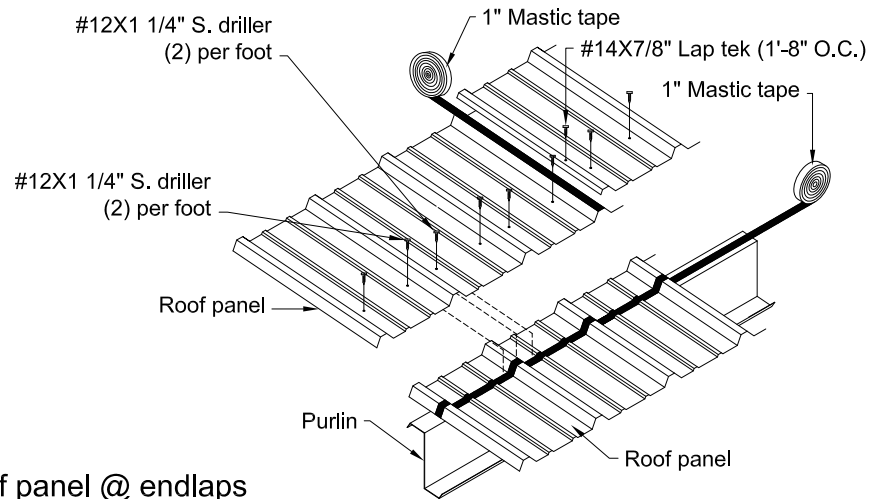
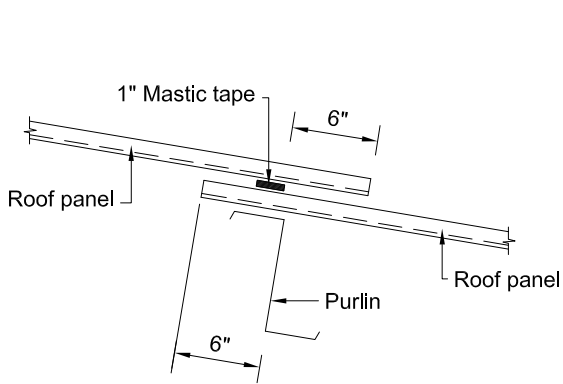
Roof Panel Fasteners - Panel to purlin connections to be #12-14x1 1/4" self drilling hex head with 5/8" O.D. washer 12" O.C.
 Spacing at eave, peak and endlaps to be in a 5-7-5-7 repeating pattern.
 Spacing for panel to panel connections to be 1'-8" O.C. with a fastener located over each purlin.
Purlins - No. 16 MSG min. gauge steel. (55 ksi minimum yield strength)



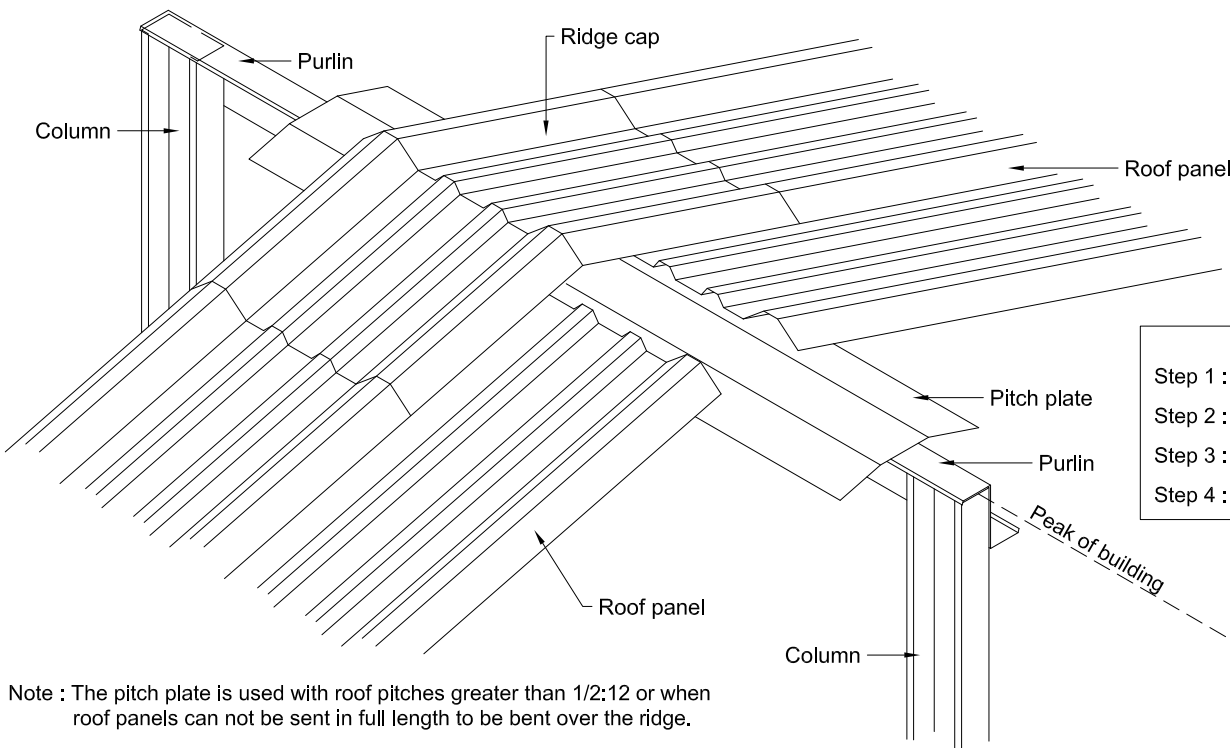
Roof panel layout at peak for gable buildings 40'-0" wide or less
 *Note: For buildings 40'-0" wide, (1/2:12 pitch), roof panels will be sent as one piece per customer request only.



Roof panel layout at peak for gable buildings 40'-0" wide or greater or when roof pitch is greater than (1/2:12 pitch)



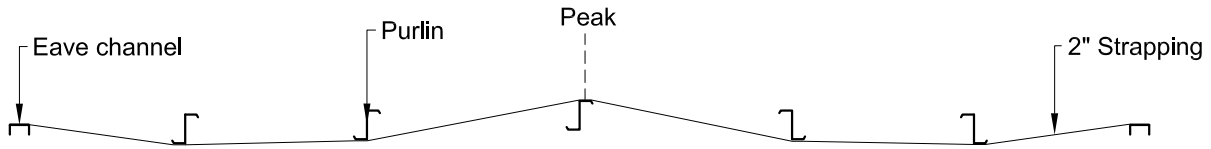
Roof panel @ endlaps



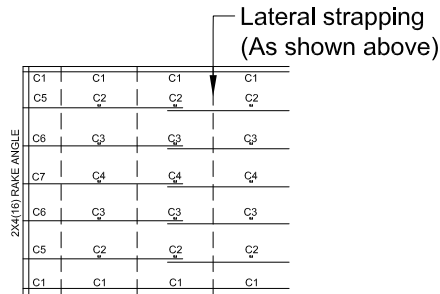
- Erection sequence**
- Step 1 : Purlin attaches to cee column
 - Step 2 : Pitch plate attaches to top of purlin
 - Step 3 : Roof panel attaches to pitch plate
 - Step 4 : Ridge cap attaches to roof panel

Note : The pitch plate is used with roof pitches greater than 1/2:12 or when roof panels can not be sent in full length to be bent over the ridge.

Note: All strapping must be pulled tight with no sags.

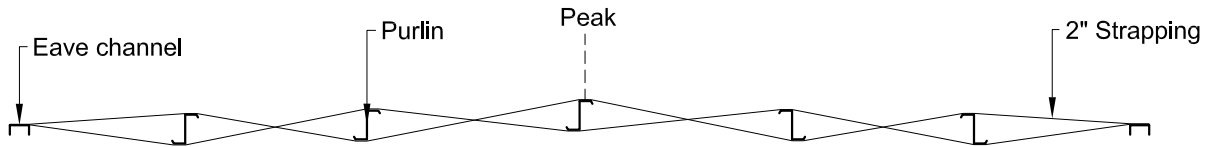


Lateral roof strapping - screw down roof
 Attach with (2) #12X3/4" s. drillers at eave channel and each purlin.

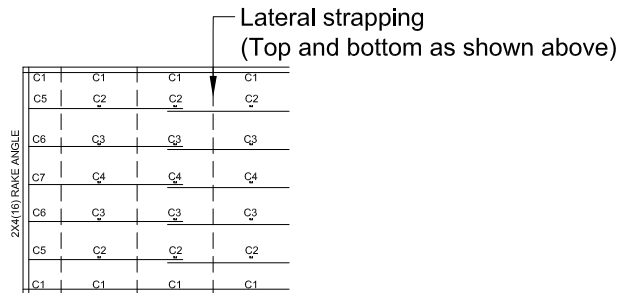


Example of lateral strapping as seen on roof framing diagram on erection drawings.

Note: All strapping must be pulled tight with no sags.



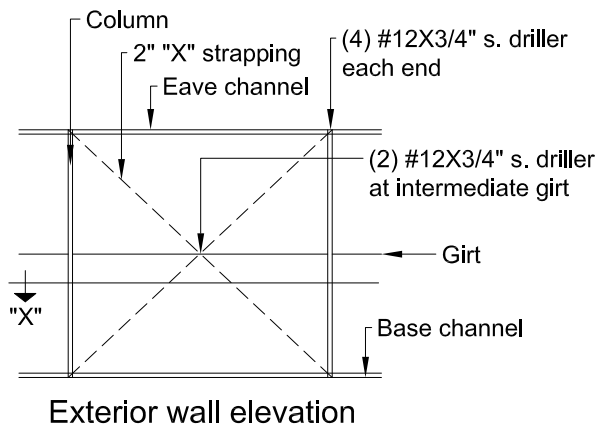
Lateral roof strapping - standing seam roof
 Attach with (2) #12X3/4" s. drillers at eave channel and each purlin.



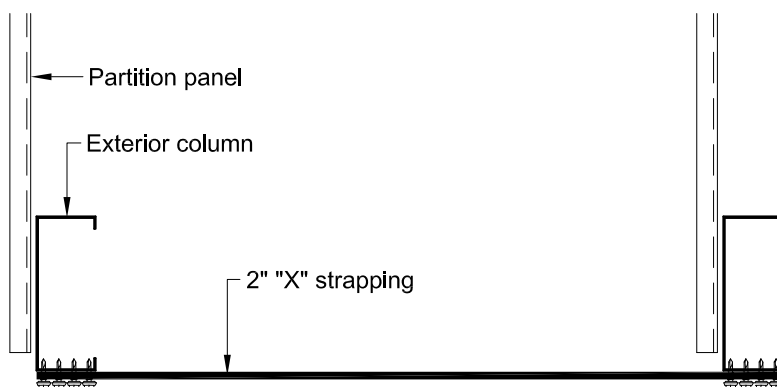
Example of lateral strapping as seen on roof framing diagram on erection drawings.

Wall "X" strapping

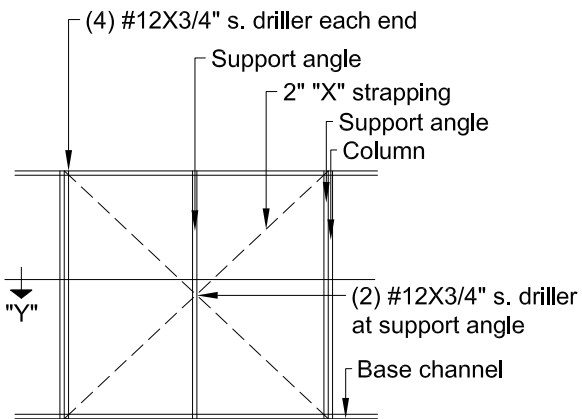
Wall "X" strapping must attach to column to column with (4) #12X3/4" s. drillers each end and (2) #12X3/4" s. drillers at any intermediate girt. Place behind wall panels.



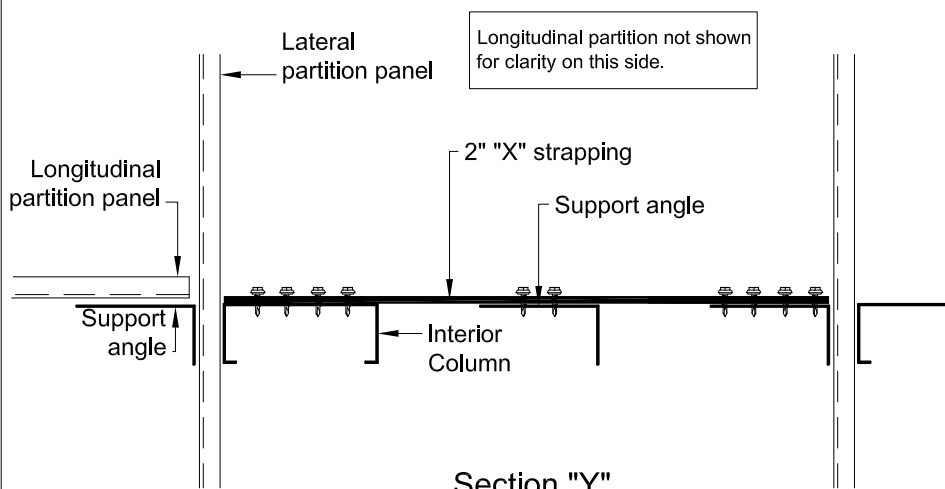
Exterior wall elevation



Section "X"



Partition wall elevation

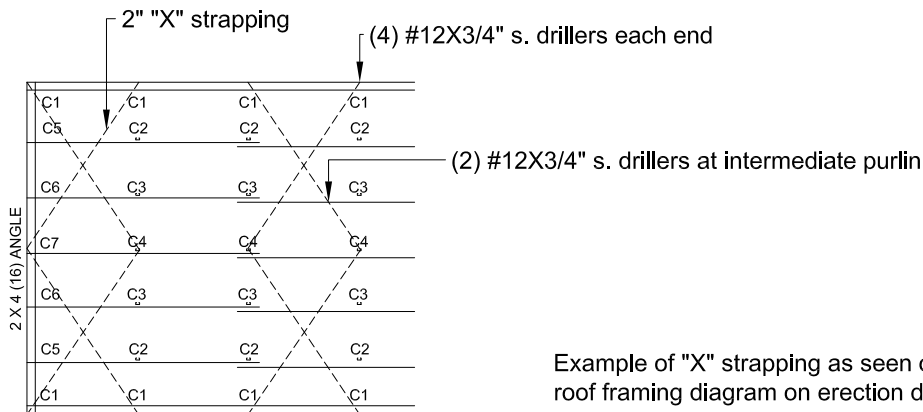
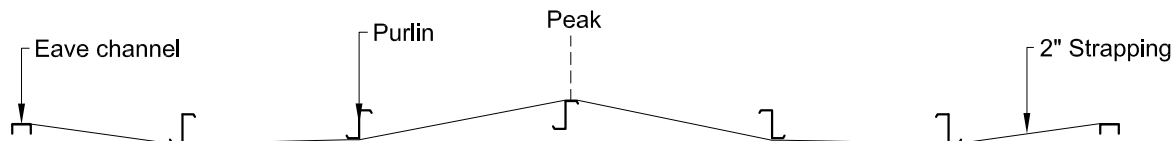


Section "Y"

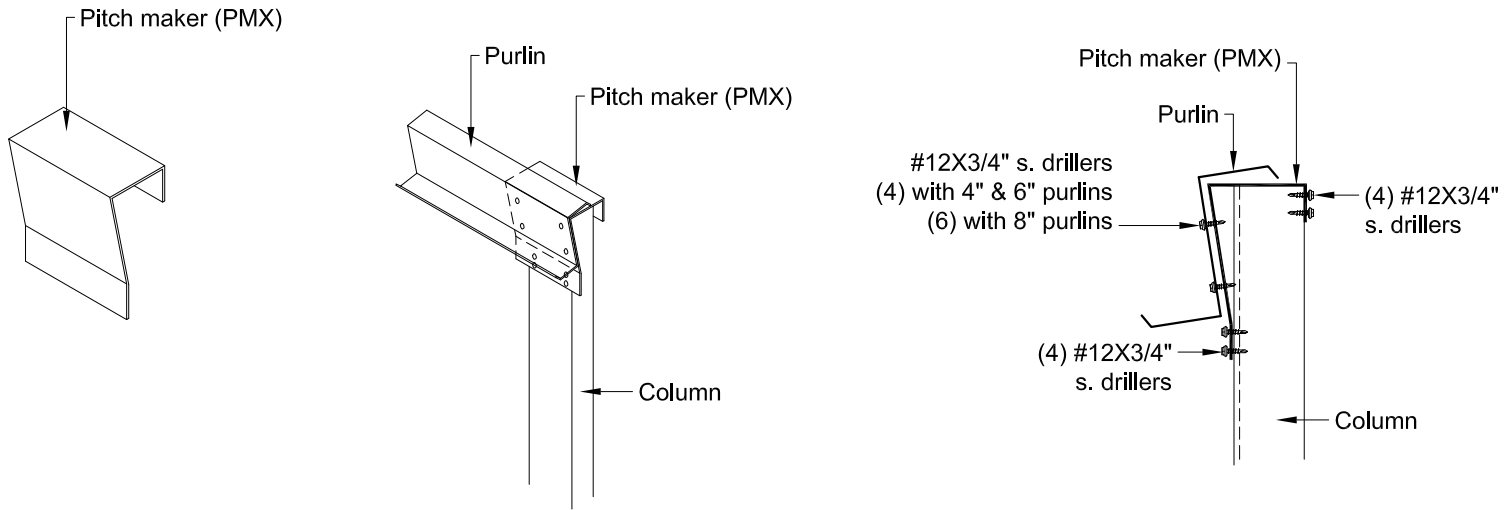
Note: All strapping must be pulled tight with no sags.

Roof "X" strapping

Roof "X" strapping must use (4) #12X3/4" s. drillers at each end and (2) #12X3/4" s. drillers at each intermediate purlin.

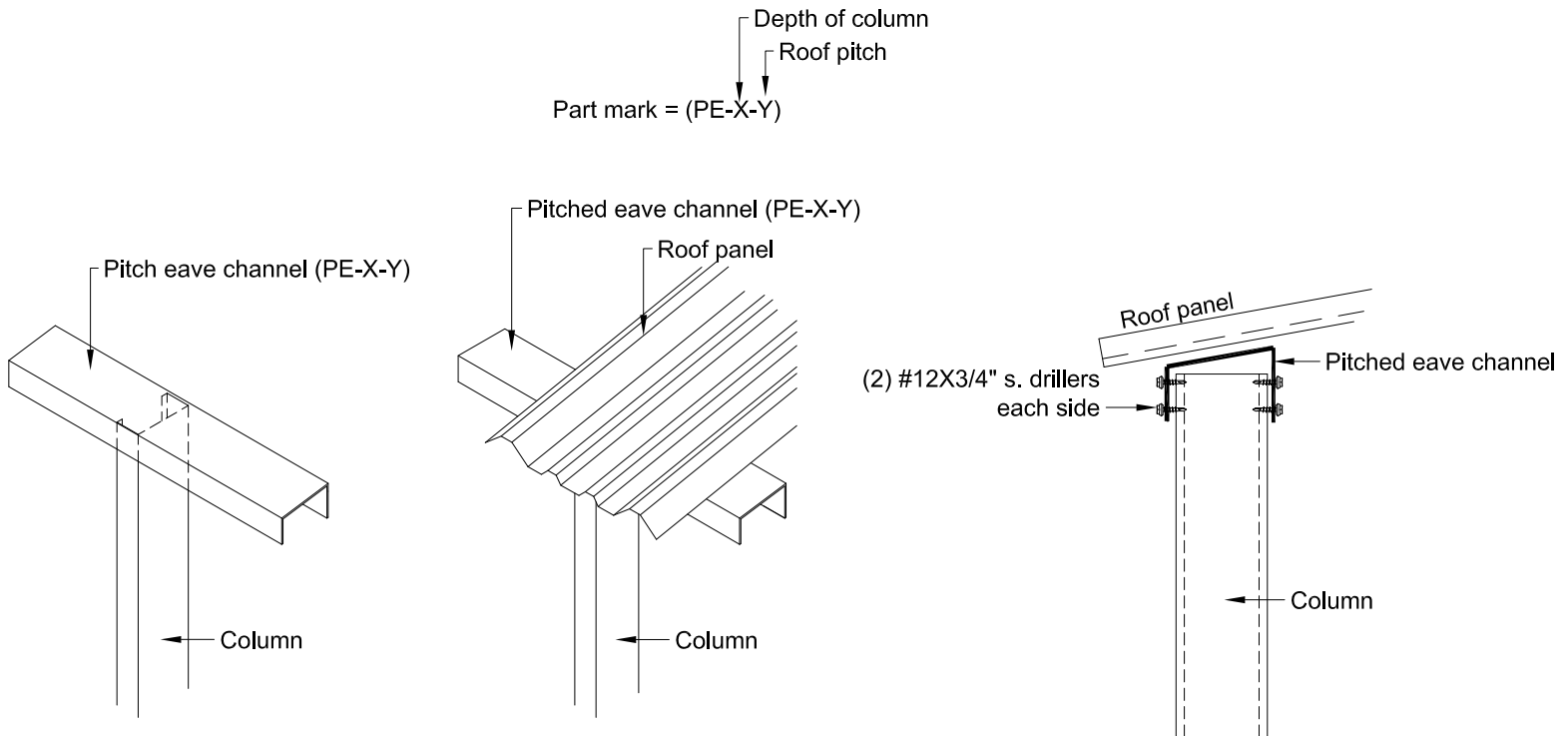


Example of "X" strapping as seen on roof framing diagram on erection drawings.



Pitch maker attachment

Note: Pitch maker is used on buildings with a (2:12) pitch or greater only.
 The pitch maker will attach directly on top of the column, then the purlin will attach to the pitch maker at the same pitch as the roof.



Pitched eave channel

Note: For buildings with a (1:12) pitch or greater only.